



Claremont Road, TW1

£2,200,000

Dexters



Claremont Road, TW1

A magnificent five bedroom semi detached house in one of St Margarets premium roads in the village. With ample period features and charm throughout this property is not to be missed.

Enter on the ground floor to a large front formal reception room which has an open fire, a large bay window and plantation shutters. In the middle of the house there is a study, a utility room and also a downstairs WC as well as access to a cellar.

At the rear of the property is a large open plan kitchen/diner/ living room which has views overlooking a south facing garden which is incredibly picturesque and secluded.

On the first floor there are three double bedrooms and two bathrooms one of which is an En suite shower room to the master. On the second floor there are two further bedrooms and access to eaves storage.

Claremont road is a popular central village location within 0.3 miles of Marble Hill Park, with its tow path walks into Richmond. St Margarets village boutique shops and cafés are 0.2 miles away, as well as the mainline train station.

Features

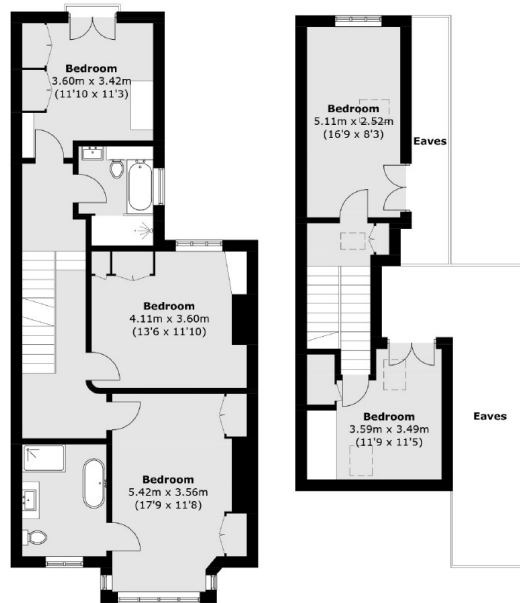
- Five Bedrooms
- Semi Detached
- Cellar
- Premium Location
- Beautifully Presented
- Period Features





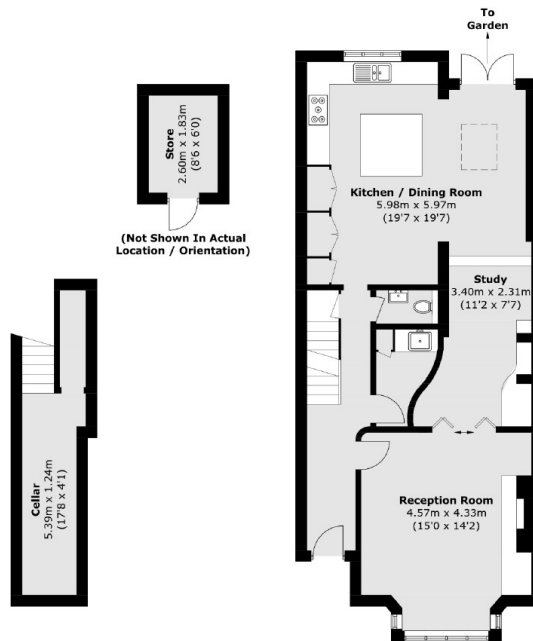


Claremont Road, Twickenham, TW1



First Floor

Second Floor



Cellar

Ground Floor

Total area (approx.): 201.0 sq. m (2,163.3 sq. ft)
(Excluding Eaves)
Store: 4.9 sq. m (52.7 sq. ft)