



Manor Park, TW9

£1,195,000

An opportunity to purchase this charming Edwardian family home which is laid out over approximately 1,280 sqft of accommodation. Manor Park provides great access to the town centre of Richmond, the River Thames and Richmond Park.

Manor Park provides great access to the town centre of Richmond where a plethora of fine restaurants & eateries can be found amongst a vast array of shops, outstanding transport links, the River Thames and Richmond Park whilst also being conveniently situated beside the Royal Botanic Gardens, Kew and the Old Deer Park. Manor Road is also well positioned for a number of outstanding Ofsted rated schools including Marshgate, Holy Trinity and St

Features

- Four Bedrooms
- Two Bathrooms
- High Ceilings
- South Facing Rear Garden
- Quiet Residential Road
- Outstanding School Catchment



Manor Park, TW9

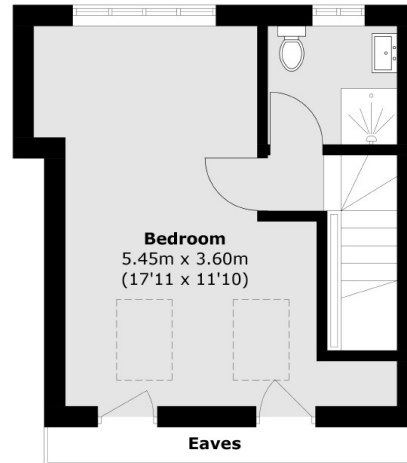
The ground floor comprises a generous entrance hall with under stairs storage and separate pantry, a front reception room with bay window and fireplace, an open plan kitchen/dining room which has been partially extended and also has french doors leading out into the rear garden.

The first floor consists of two large double bedrooms, a third single bedroom come study and a very generous four piece bathroom which occupies the second storey of the rear extension, a rare addition to have in houses such as this. The second floor has been loft extended to create a very large master bedroom which is streaming with light and has ample eaves storage. There is also a second bathroom on this floor which has been kept separate by the current owners.

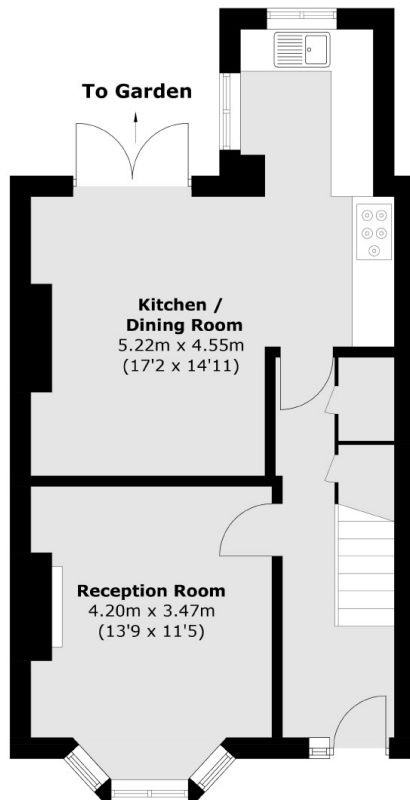
To the front of the property is a small front garden laid to tiles and patio. To the rear is a south facing garden with rear access leading onto Manor Gardens.



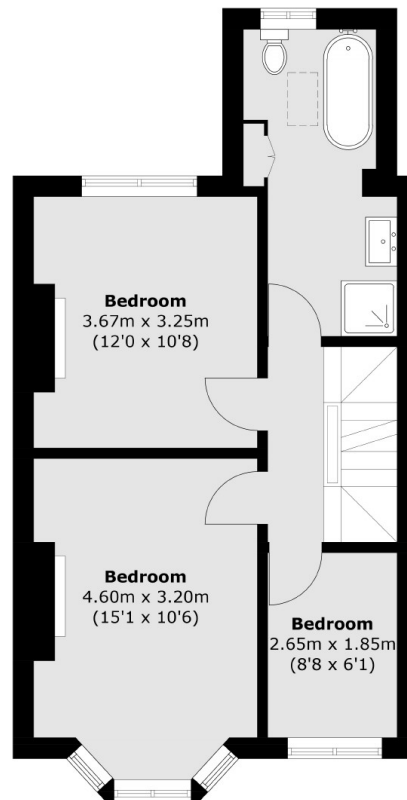
Manor Park, Richmond, TW9



Second Floor



Ground Floor



First Floor

Total area (approx.): 118.9 sq. m (1279.6 sq. ft)
(Excluding Eaves)