



Park Lane, TW9

£2,695 Per calendar month

An opportunity to rent this three bedroom mews house located close to Richmond Green. The property is finished to a very high standard, whilst still retaining character.

Ideally located close to Richmond town centre, Richmond Riverside, Richmond Park. Richmond train station offers access to London by tube or rail via the District line, South West trains and the London Overground service.

Features

- Three Bedrooms
- Modern Kitchen
- High Spec
- Large Reception Room
- Patio Garden
- Central Location



Park Lane, TW9

Set over two floors is this beautiful mews house offers a bright and modern kitchen, a downstairs W.C, a spacious reception/dining room with wood floors throughout and double doors leading on the patio garden.

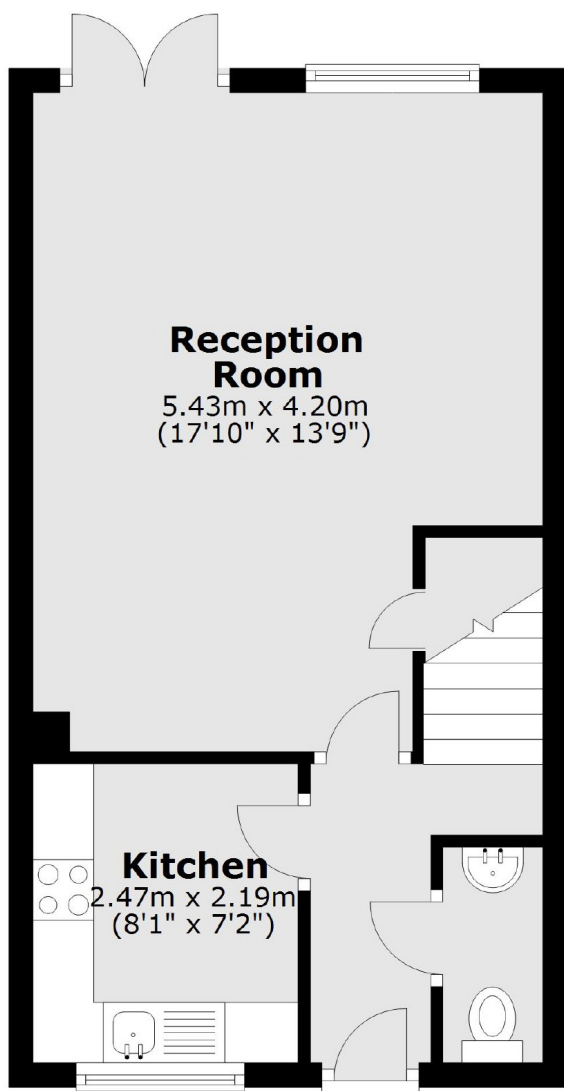
Upstairs on the first floor there are two double bedrooms, a further single bedroom fully carpeted throughout and a modern family-size bathroom.

Holy Trinity, Marshgate and St Elizabeth's primary schools, Ofsted rated outstanding, are close by along with many areas of natural greenery making it a perfect location for families and professionals alike.

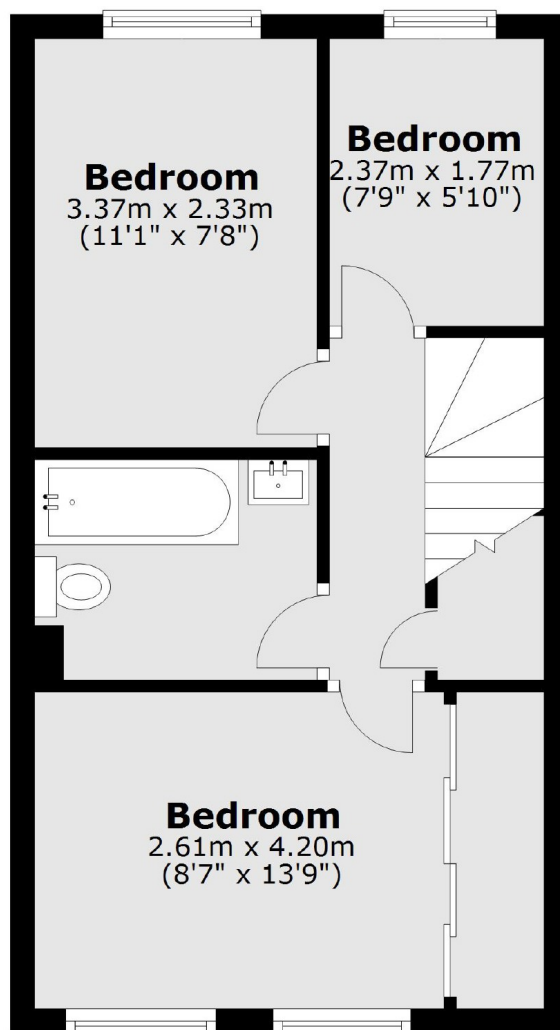


Park Lane, Richmond, TW9

Ground Floor



First Floor



Total area: approx. 67.2 sq. metres (723.3 sq. feet)