



Longfield Drive, SW14

£5,000 Per calendar month

Dexters



Longfield Drive, SW14

A unique and impressive five bedroom apartment in an imposing and beautiful Victorian Manor House. A rare opportunity to secure a truly unique property backing onto Richmond Park, ideal for a busy family wanting the Richmond lifestyle.

Also within close proximity of popular local schools such as Sheen Mount School, which is only moments away. This split level property is in good condition throughout with stunning character and charm.

There is an exceptionally large reception room with high ceilings and doors onto a private garden. An additional dining room, beautiful modern kitchen with integrated appliances, four generous double bedrooms all with fitted wardrobes, additional fifth guest bedroom or study, modern bathroom and three en-suite shower rooms.

This substantial house also has extensive communal gardens with pedestrian gate directly into Richmond Park and off street parking for one car.

Longfield House is located at the end of a pretty and secluded driveway a short distance from the lovely shops, restaurants and cafes in East Sheen.

Features

- Five Bedrooms
- Secluded Driveway
- Private Garden
- Parkside Location
- High Ceilings
- Unfurnished



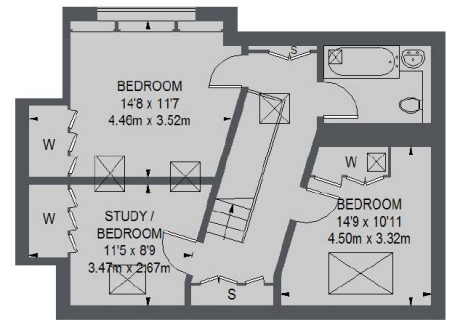




Longfield Drive, London, SW14



GROUND FLOOR



FIRST FLOOR

TOTAL APPROX. FLOOR AREA
(EXCLUDING STORE)
2063 SQ. FT. (191.67 SQ. M.)
SHED = 74 SQ. FT. (6.88 SQ. M.)