



## Wakefield Road, TW10

£575,000

A very well presented two double bedroom split level apartment situated in an enviable location in central Richmond. The property would be an ideal purchase for commuters working in the city or those looking for a safe and secure pied-a-terre. The apartment is to be sold with no onward chain.

Centrally situated, Wakefield Road is ideally located for Richmond's array of shopping and leisure amenities including Richmond Park and the River Thames. Richmond train station offers access to and from London by tube or rail via the District line, South Western trains and the London Overground service.

### Features

- Two Double Bedrooms
- Split Level Apartment
- Communal Courtyard
- Maisonette
- Central Richmond
- Outstanding Condition



## Wakefield Road, TW10

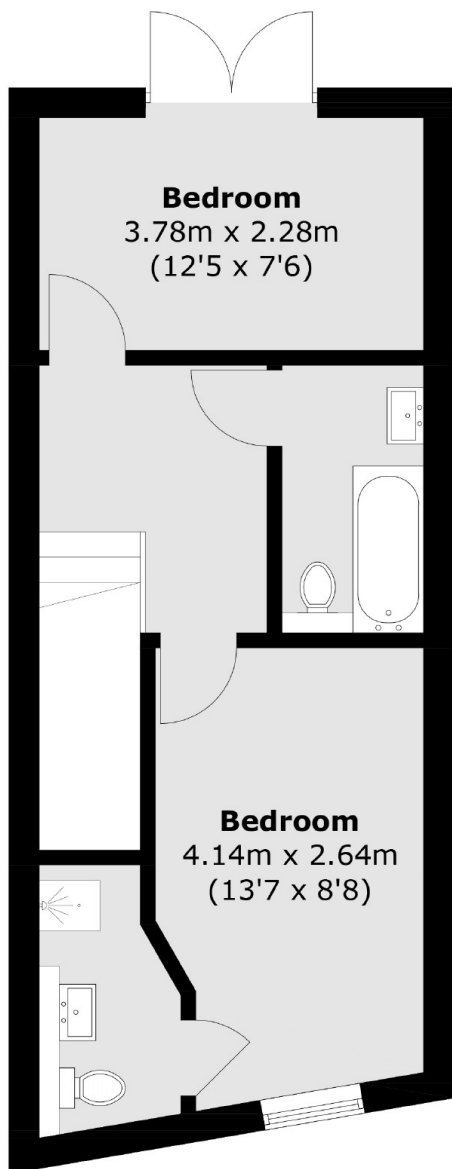
The property is entered through its own front door which enters into a hallway. The ground floor accommodation comprises a spacious and modern kitchen set in an open plan reception room which has a Juliet balcony overlooking the communal courtyard.

Stairs from the hallway lead downstairs to the two double bedrooms, one of which has an ensuite shower room, and also a family bathroom. The second bedroom provides direct access through French doors to the tidy communal courtyard.

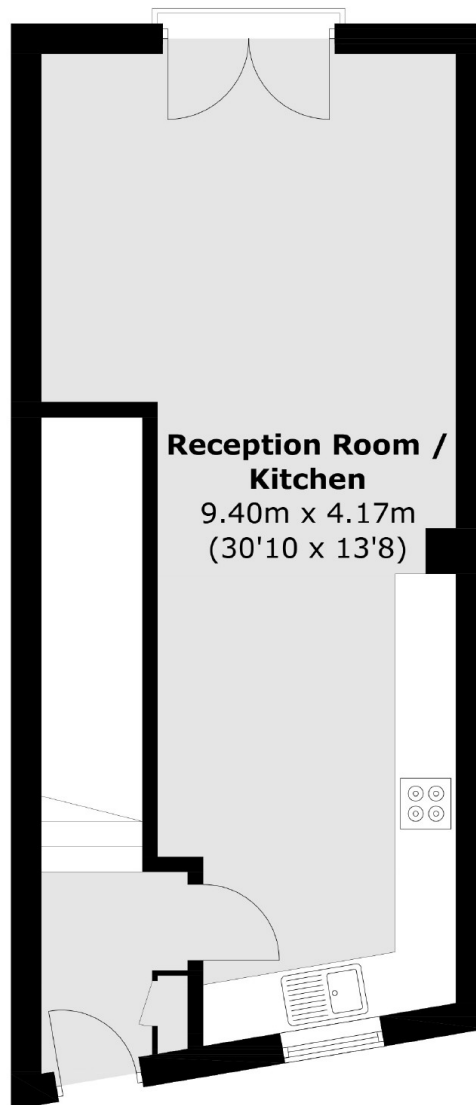
To the rear of the property is a spacious and enclosed communal courtyard which is only accessible by residents.



# Wakefield Road, Richmond, TW10



**Lower Ground Floor**



**Ground Floor**

Total area (approx.): 77.7 sq. m (836.2 sq. ft)