



Lower Mortlake Road, TW9

£325,000

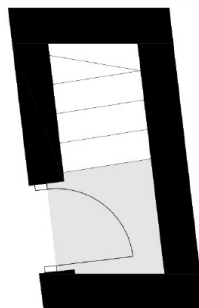
An opportunity to purchase this beautifully designed and maintained one bedroom apartment. The property is conveniently situated for the local amenities of Richmond town centre as well as the green open spaces of Richmond Park and Kew Gardens and would make the perfect purchase for a first time buyer, investor, or those looking for a safe and secure pied-a-terre.

Lower Mortlake Road is ideally located for Richmond Park and Royal Botanic Gardens Kew. The commuter is equally well catered for with Richmond, Kew Gardens and North Sheen stations close to hand with additional excellent bus services to Central London.

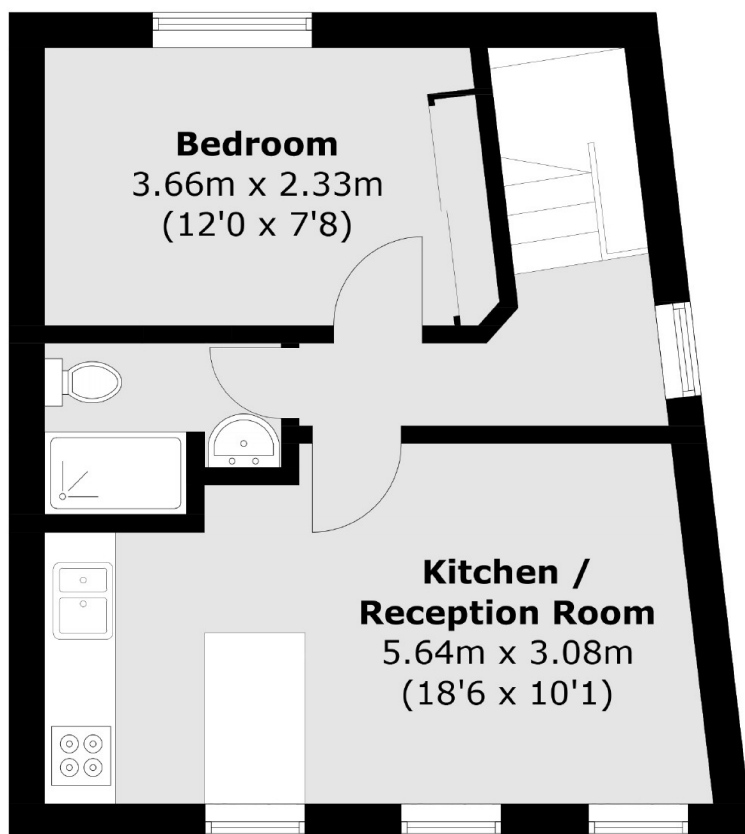
Features

- One Double Bedroom
- Modern Open Plan Kitchen
- South Facing Reception Room
- Excellent Condition
- Close To Transport
- No Onward Chain

Lower Mortlake Road, Richmond, TW9



Second Floor



Third Floor

Total area (approx.): 35.4 sq. m (381.0 sq. ft)