



Lauderdale Drive, TW10

£7,500 Per calendar month

Cornerstone House is a detached six bedroom house offering excellent living space and modern interior, with three large reception rooms, eat-in kitchen, two modern bathrooms and an impressive landscaped garden.

Lauderdale Drive is ideally located in Ham/Petersham with Richmond Park on your doorstep. The area is perfect for a family who enjoy the outdoors whilst keeping within easy reach of Richmond and Kingston town centres.

Features

- Detached House
- Wooden Floors
- Landscaped Garden
- Three Reception Rooms
- Off-Street Parking
- Six Bedrooms



Lauderdale Drive, TW10

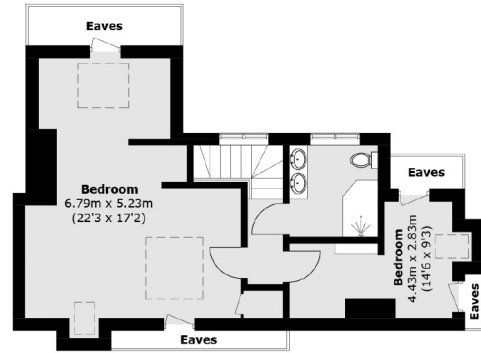
A wonderful family home finished to a great standard but still retaining much of its character. There is also wooden flooring throughout and neutral decor.

It has generous rooms and great living space including a front reception room with feature fireplace, separate reception room with doors leading onto the garden.

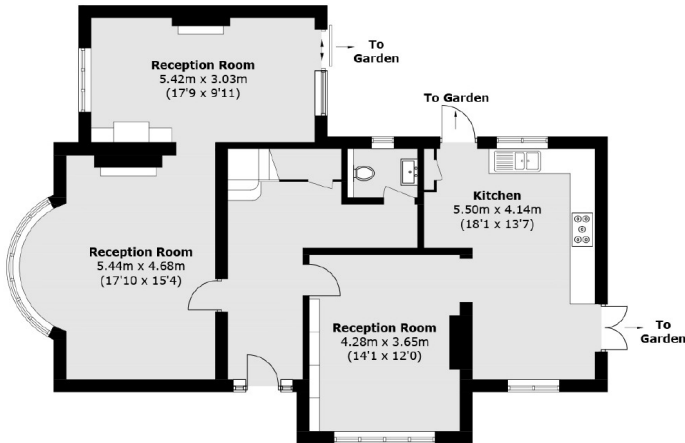
The large garden is one of the house's many selling points; a fantastic sized garden with all day sun, ideal for barbeques, summer gatherings and playing with the children.



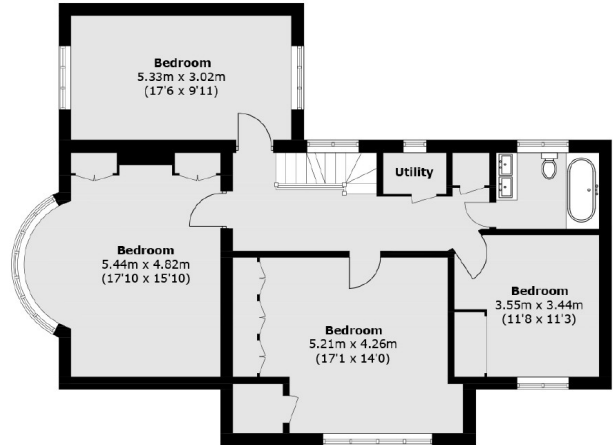
Lauderdale Drive, Richmond, TW10



Second Floor



Ground Floor



First Floor

Total area (approx.): 242.1 sq. m (2,605.9 sq. ft)
(Excluding Eaves)