



## Watcombe Cottages, TW9

£1,075,000

This Victorian Cottage enjoys a truly idyllic setting directly on the Thames Path, offering picturesque views of the river and a lifestyle defined by tranquility and natural beauty. Rich in period character, the home combines original features with comfortable, well-balanced accommodation arranged over two floors, complemented by a delightful private rear garden.

Located close to the restaurants and bars around Kew Green and within easy reach of Kew Bridge mainline station, Kew Gardens underground station, local shopping amenities and the main entrance to the Royal Botanic Gardens.

### Features

- Two Double Bedrooms
- Idyllic River Views
- Garden
- Victorian Cottage
- Residents Permit Parking
- Just Off Kew Green





## Watcombe Cottages, TW9

On the ground floor, an inviting entrance hall leads to a spacious reception room with two striking feature fireplaces, creating a warm and welcoming atmosphere. To the rear, a bright and airy kitchen/dining room provides an ideal space for family life and entertaining, with French doors opening onto the secluded garden.

Upstairs, a generous landing gives access to two well-proportioned double bedrooms and a stylish family bathroom. The principal bedroom takes full advantage of the home's exceptional position, offering beautiful views over the River Thames.

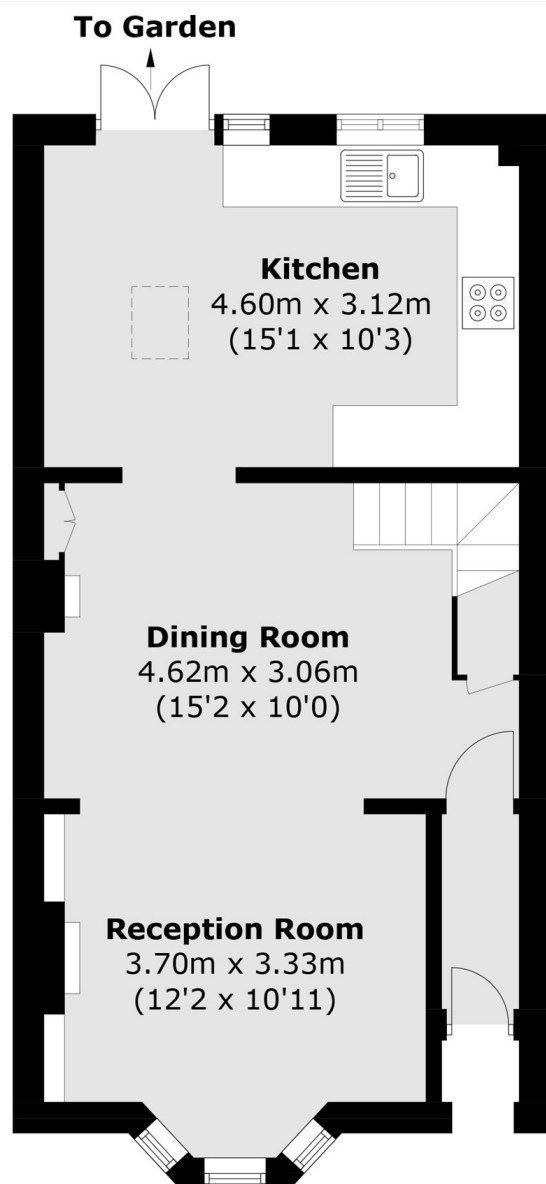
Outside, the secluded garden provides an ideal setting for entertaining or simply relaxing in peace and privacy.



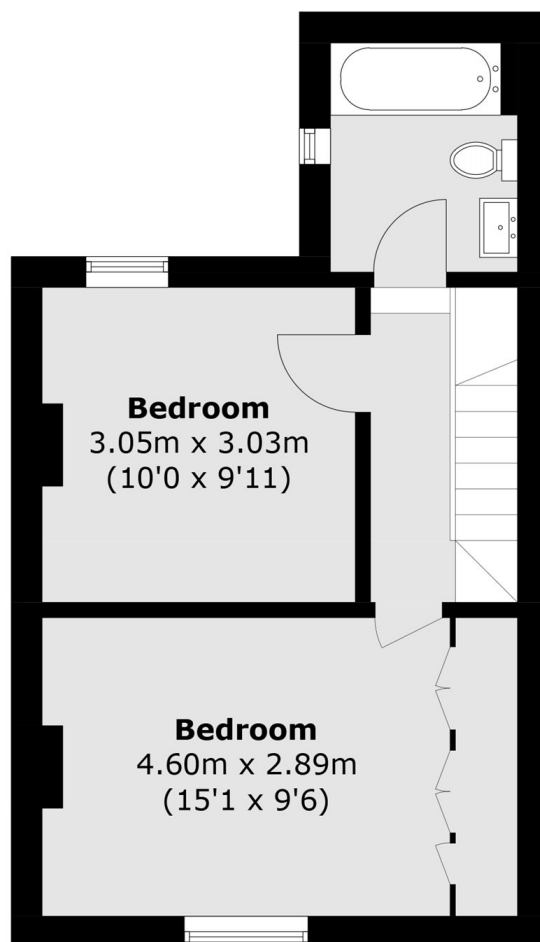




# Watcombe Cottages, Kew, TW9



**Ground Floor**



**First Floor**

Total area (approx.): 75.1 sq. m (808.4 sq. ft)