



Richmond Hill, TW10

£4,500 Per calendar month

A beautiful four bedroom apartment within a stunning mansion block on Richmond Hill. There is a large entrance hall, modern kitchen, double reception room, three bathrooms and underground parking.

Moments from the Terrace Gardens with one of the most famous views in London and also close to great pubs, shops and cafés on Richmond Hill whilst only a short distance to Richmond town centre.

Features

- Four Bedrooms
- Mansion Block With Porter
- Excellent Condition Throughout
- Wooden Floors
- Underground Parking
- Richmond Hill



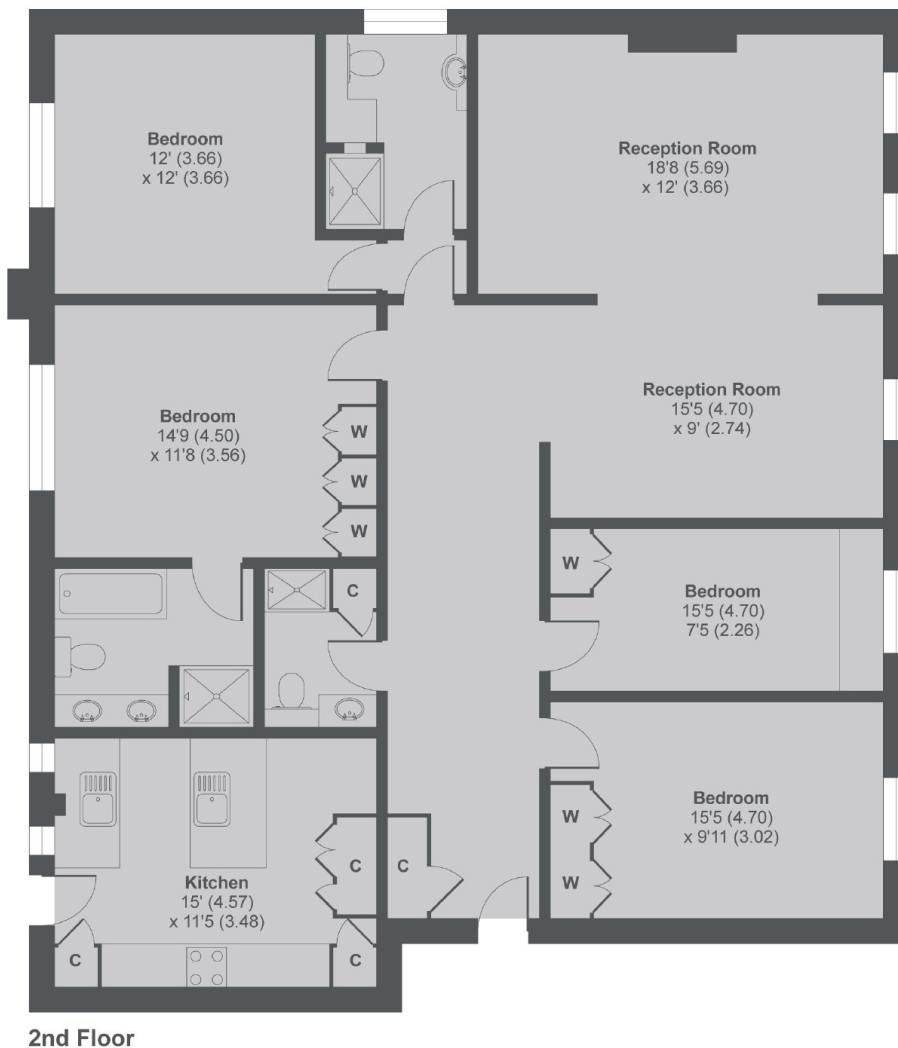
Richmond Hill, TW10

The apartment is in immaculate order and beautifully presented, with maple wooden flooring, stylish decor and modern features throughout whilst still retaining period charm.

It has generous rooms and great living space including an elegant double reception room and contemporary kitchen/diner.



Richmond Hill, Richmond, TW10



Richmond Hill TW10

MAIN HOUSE APPROX FLOOR AREA 1605 SQ.FT 149.1 SQ.M
Copyright nichecom.co.uk 2016 Produced for Dexters REF : 93922

Dexters

Richmond
1 Sheen Road
Richmond
TW9 1AD
Lettings
020 8288 0828

Energy Rating: E. We aim to make our particulars both accurate and reliable. However they are not guaranteed; nor do they form part of an offer or contract. If you require clarification on any points then please contact us, especially if you're traveling some distance to view. Please note that appliances and heating systems have not been tested and therefore no warranties can be given as to their good working order.

 **RICS** | Regulated
Estate Agent
and Letting Agent

dexters.co.uk