



**Petersham Road, TW10**

**£3,750** Per calendar month

**Dexters**



## Petersham Road, TW10

A beautifully presented four bedroom home, close to Petersham nurseries and the beautiful protected view of the meadows. Perfect for the modern family.

Petersham Road is ideally located with easy access to both Richmond and Kingston town centre and close to the German School.

### Features

- Four Bedrooms
- Bright and Spacious
- Modern Bathrooms
- The German School
- Views of the Meadows
- Built in Fireplaces



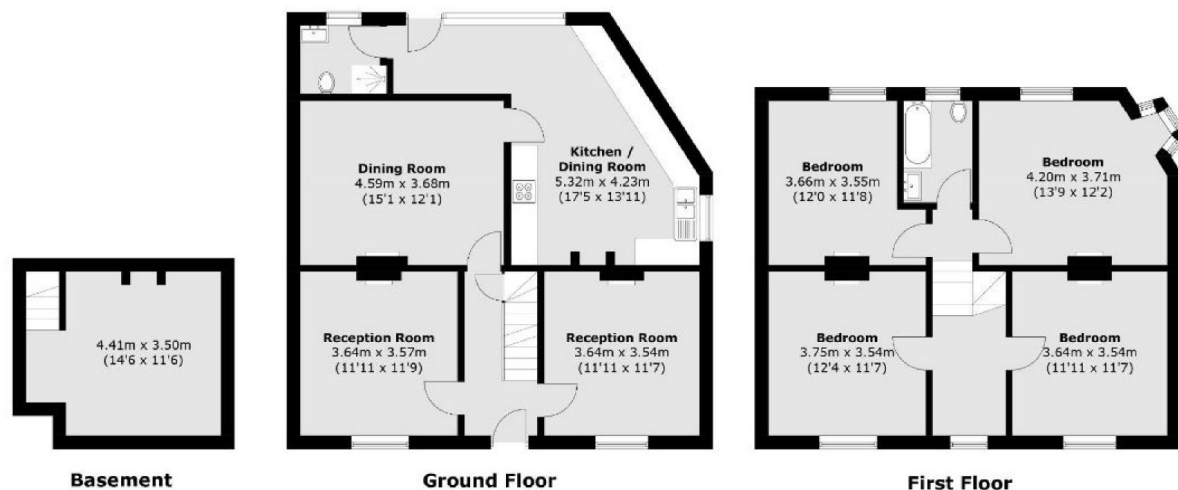








# Petersham Road, Richmond, TW10



Total area (approx.): 162.9 sq. m (1,753.5 sq. ft)