



Sheen Road, TW9

£475,000

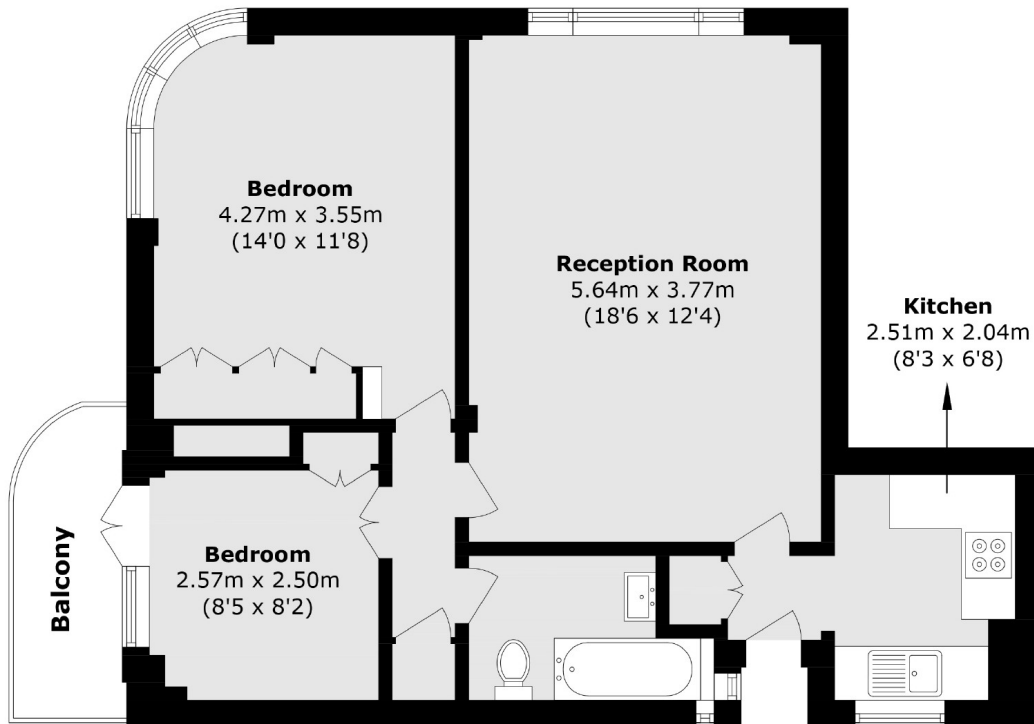
Set within an iconic Art Deco Grade II Listed building is this two bedroom, first floor apartment offering a large balcony. The apartment comes with a share of freehold, an on-site porter offering 24/7 security, residents off street parking with EV charging points, and no onward chain.

Lichfield Court is ideally located for Richmond's array of shopping and leisure amenities including Richmond Park and the River Thames. Richmond train station offers access to London via the District line, South Western trains and the London Overground service.

Features

- Fourth Floor Flat with Lift Access
- Large Balcony
- Two Bedroom
- Share Of Freehold
- Off Street Parking
- No Onward Chain

Sheen Road, Richmond, TW9



Total area (approx.): 59.2 sq. m (637.2 sq. ft)
Balcony area (approx.): 4.2 sq. m (45.2 sq. ft)