



Colston Road, SW14

£299,950

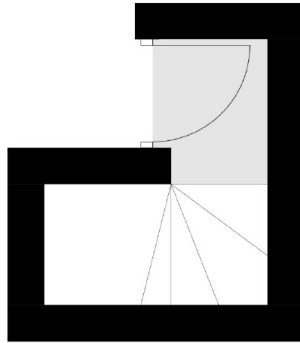
This ideally located one bedroom apartment is presented in good order throughout and offers an open plan kitchen/living space, a modern bathroom, and one bedroom. The apartment is to be sold with no onward chain and would be a perfect investment or pied-a-terre.

Colston Road is ideally located for the extensive shopping and leisure amenities of East Sheen including Waitrose and a number of restaurants and cafes, together with bus routes giving access to Richmond, Putney and Barnes. Mortlake mainline station which provides regular services to London Waterloo is approximately 0.4 miles away.

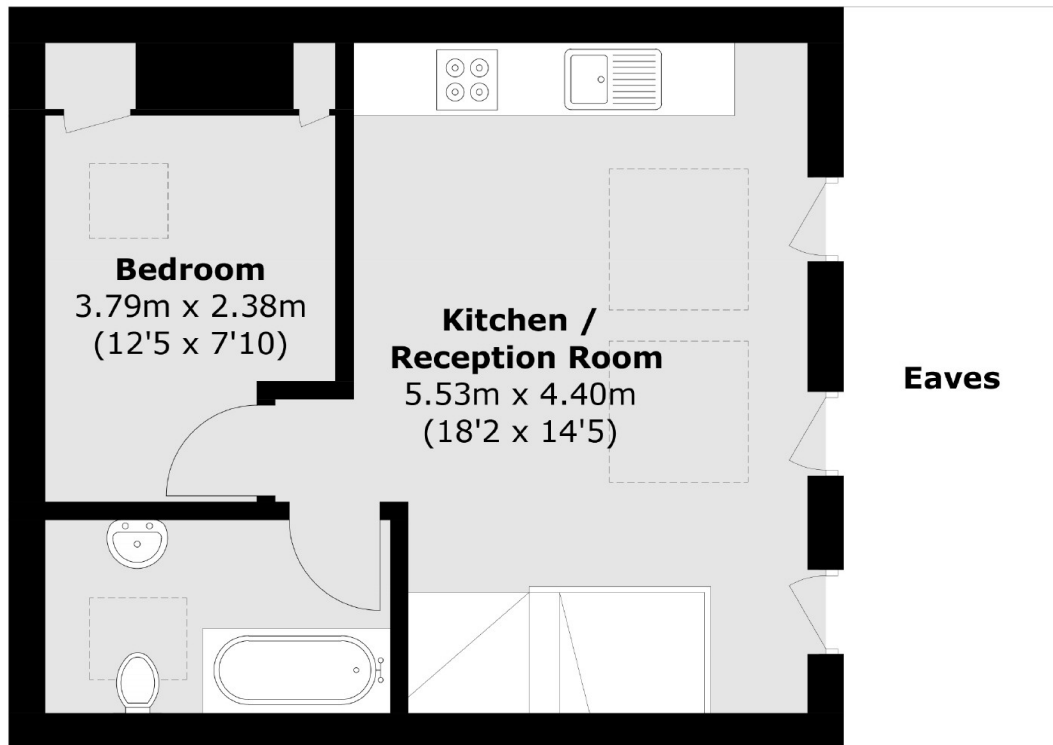
Features

- One Bedroom
- Central Sheen
- Good Condition
- No Onward Chain
- Neutral Decor
- Ideal Investment

**Colston Road,
London, SW14**



First Floor



Second Floor

Total area (approx.): 38.2 sq. m (411.2 sq. ft)
(Excluding Eaves)

Dexters

Richmond
1 Sheen Road
Richmond
TW9 1AD
Sales
020 8288 9988

Energy Rating: C. We aim to make our particulars both accurate and reliable. However they are not guaranteed; nor do they form part of an offer or contract. If you require clarification on any points then please contact us, especially if you're traveling some distance to view. Please note that appliances and heating systems have not been tested and therefore no warranties can be given as to their good working order.

 **RICS** | Regulated
Estate Agent
and Letting Agent

[dexters.co.uk](https://www.dexters.co.uk)