



Lauderdale Drive, TW10

£4,500 Per calendar month

A Beautiful three bedroom family home located in Ham, close to the German School, Grey Court, Ham Common and Richmond Park.

Located for a family looking for great schools, plenty of greenery on your doorstep including Richmond Park, The River Thames and Ham Fields.

Features

- Three Bedrooms
- Driveway
- Garden
- Garage
- Good Condition
- Excellent Schools Nearby



Lauderdale Drive, TW10

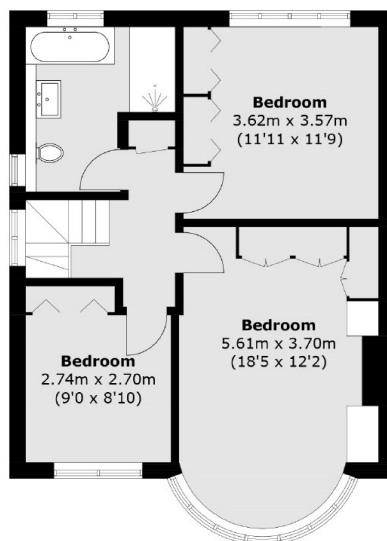
The house is presented in good condition throughout and has both driveway to the front and a lovely private garden to the rear. The ground floor has a wonderful open plank kitchen/reception room, plus two further reception rooms.

Upstairs there are three good sized bedrooms plus family bathroom. The house also benefits from a garage.

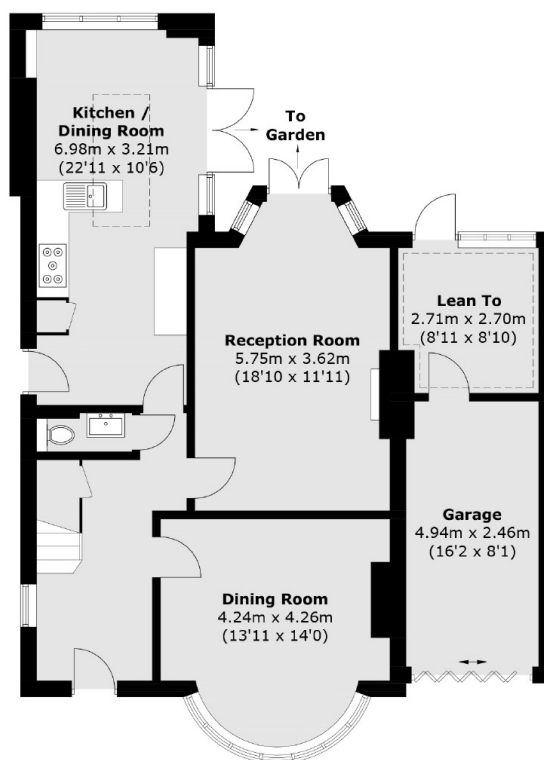
Lauderdale Drive is a popular residential road close to the German School, Grey Court, Ham Common and Richmond Park.



Lauderdale Drive, Richmond, TW10



First Floor



Ground Floor

Approx Internal Area: 126.1 sq. m (1,357.3 sq. ft)
Lean To / Garage: 19.9 sq. m (214.2 sq. ft)