



## Lewis Road, TW10

**£1,595** Per calendar month

A lovely one bedroom apartment located in quiet development set around a secure courtyard. The flat is a good size with a reception room, modern kitchen, double bedroom with fitted wardrobes and modern bathroom.

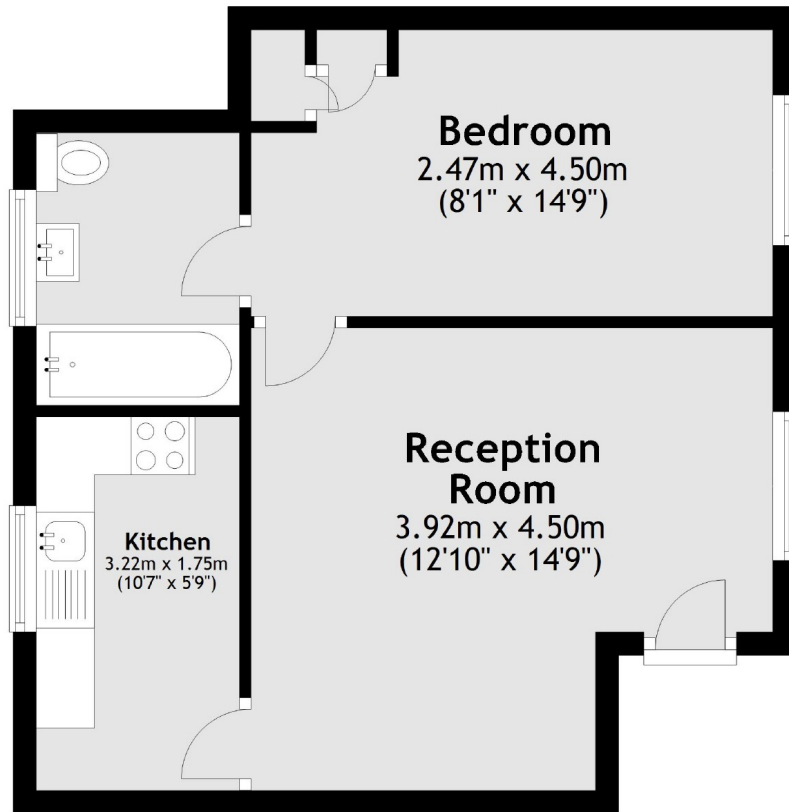
Centrally situated, Glovers Lodge is ideally located for Richmond's array of shopping and leisure amenities including Richmond Park and the River Thames. Richmond train station offers access to and from London by tube or rail via the District line, South Western trains and the London Overground service.

### Features

- One Bedroom
- Quiet Development
- Courtyard Garden
- Modern Bathroom
- Modern Kitchen
- Centrally Located

# Lewis Road, Richmond, TW10

## Second Floor



Total area: approx. 37.9 sq. metres (407.9 sq. feet)