



## Sheen Park, TW9

£6,995 Per calendar month

This four bedroom family home has been beautifully and tastefully decorated throughout, with a great balance of modern features. Perfect for a family looking for stylish living.

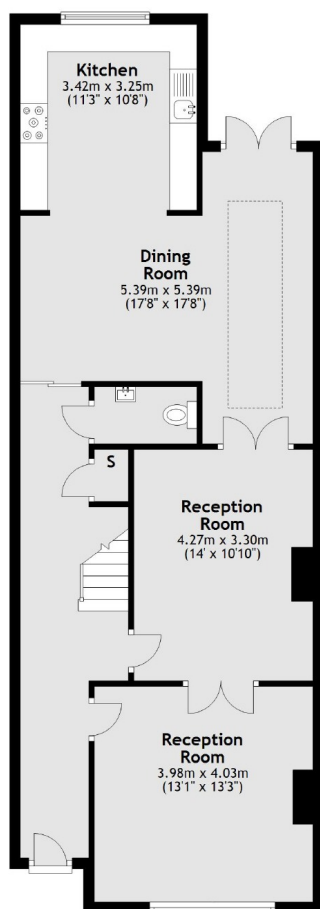
Sheen Park is close to Richmond town centre with its many shops, bars and restaurants. Within the catchment for Ofsted outstanding schools such as Marshgate, The Vineyard, Kings House and Old Vicarage School. Richmond station served by District Line and Overground trains.

### Features

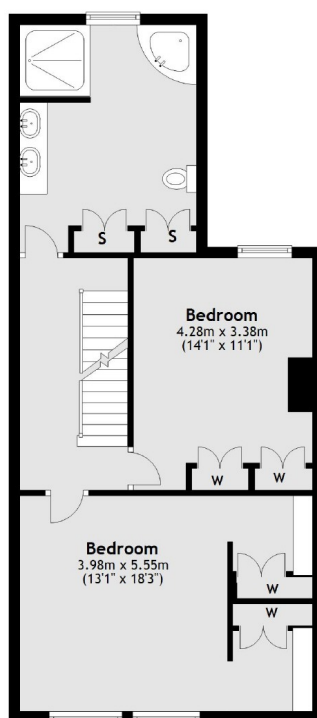
- Four Bedrooms
- Two Bathrooms
- Large Living Area
- Garage for Storage
- Modern and Stylish
- Garden

# Sheen Park, Richmond, TW9

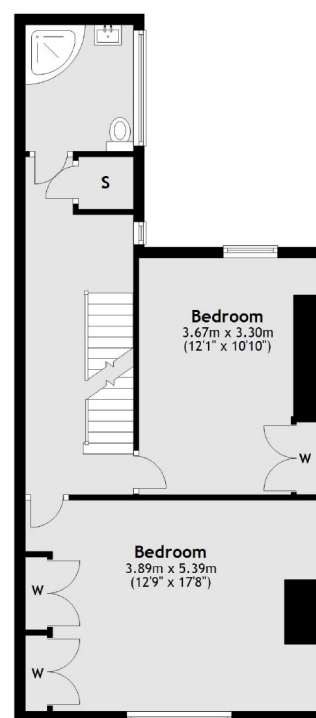
Ground Floor



First Floor



Second Floor



Total area: approx. 193.8 sq. metres (2086.4 sq. feet)

## Dexters

Richmond  
1 Sheen Road  
Richmond  
TW9 1AD

Lettings  
020 8288 0828

Energy Rating: E. We aim to make our particulars both accurate and reliable. However they are not guaranteed; nor do they form part of an offer or contract. If you require clarification on any points then please contact us, especially if you're traveling some distance to view. Please note that appliances and heating systems have not been tested and therefore no warranties can be given as to their good working order.

**RICS** Regulated  
Estate Agent  
and Letting Agent

dexters.co.uk