



## Buckingham Road, TW10

### £785,000

A beautifully presented end of terrace family home which has been modernised by the current owners to create a modern and contemporary interior whilst offering approximately 892 sq ft of accommodation.

If its green open spaces you love then this location will not disappoint with Ham Common, Richmond Park, Petersham Meadows and the River Thames all on your doorstep. Families are also well catered for with the German School, Grey Court School and Meadlands Primary School. Teddington Lock provides easy access to Teddington High Street with Richmond and Kingston readily accessible via bus.

### Features

- Three Bedrooms
- Modern Kitchen
- Modern Bathroom
- Separate Outbuilding
- Ample Off Street Parking
- No Onward Chain



## Buckingham Road, TW10

The ground floor comprises an entrance hall with downstairs WC, a double reception room, and a separate modern fitted kitchen with door leading to the rear garden.

The first floor consists of a landing, two double bedrooms, a single bedroom and a modern bathroom.

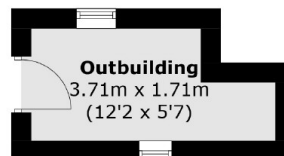
To the front of the property is ample off street parking which could also be used as a secondary garden, and to the rear is a South facing garden laid to patio with surrounding shrubs. To the side of the house is a separate outbuilding which is fully insulated and double glazed and is set up ready to use as an office, store room or utility room.

This freehold property is to be sold with no onward chain.

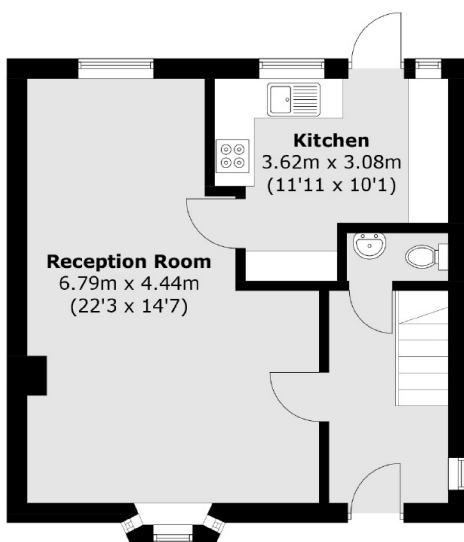




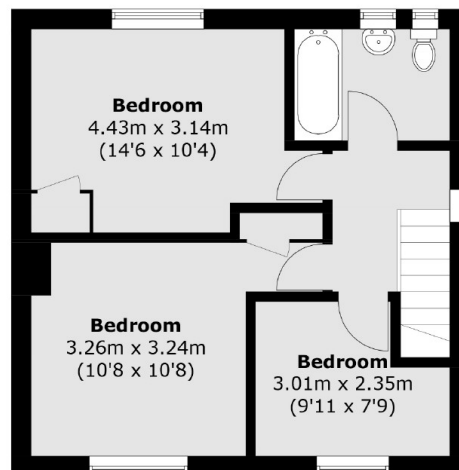
# Buckingham Road, Richmond, TW10



**Outbuilding**



**Ground Floor**



**First Floor**

Total area (approx.): 82.9 sq. m ( 892.3 sq. ft)  
Outbuilding (approx.): 5.5 sq. m ( 59.2 sq. ft)