



Arlington Road, TW10

£6,600 Per calendar month

Beautiful detached family home in Ham with driveway and large rear garden.

Arlington Road is perfectly located for a family looking for great schools, plenty of greenery on your doorstep including Richmond Park, The River Thames and Ham Fields.

Features

- Detached House
- Four Bedrooms
- Loft Workshop/Bedroom
- Large Rear Garden
- Driveway
- Excellent Reception Space



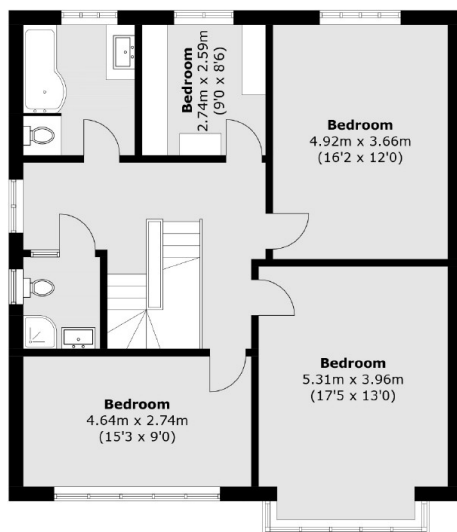
Arlington Road, TW10

The property is set over three floors with large open plan kitchen/dining area leading to the large rear garden, double reception room, utility room, downstairs cloakroom, four bedrooms, two bathrooms and loft workshop/bedroom.

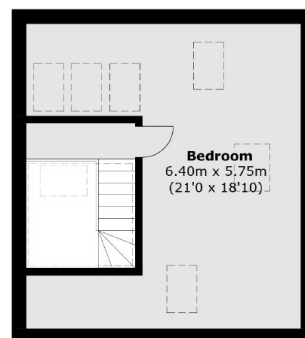
The house comes with both front and rear gardens, side return to the playing fields behind and is presented in excellent condition throughout.



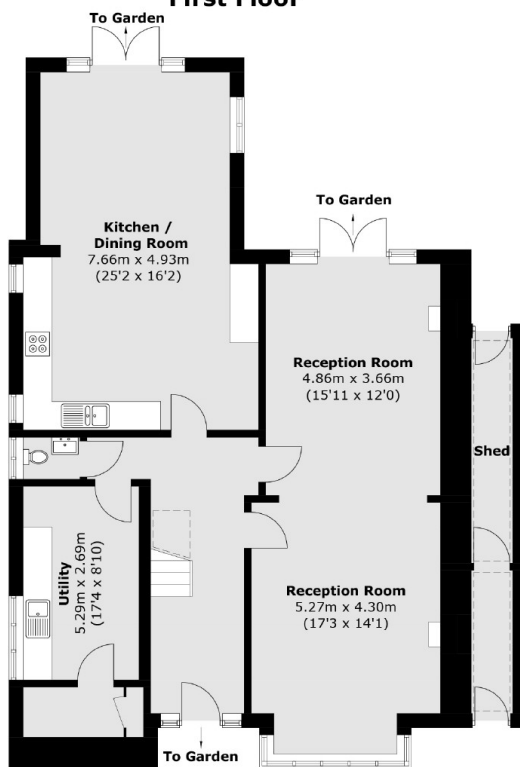
Arlington Road, Richmond, TW10



First Floor



Second Floor



Ground Floor

Total area (approx.): 227.4 sq. m (2,447.7 sq. ft)

Shed: 7.1 sq. m (76.4 sq. ft)

Total: 234.5 sq. m (2,524.1 sq. ft)