



Richmond Hill Court, TW10

£695,000

A beautifully presented third floor apartment set within a handsome and iconic period mansion block building. The property offers approximately 879 sq ft of stylish accommodation set on a prime position on Richmond Hill.

Richmond Hill Court is located on Richmond Hill, with Richmond Village, Richmond Park, Terrace Gardens, Richmond Riverside and Richmond town centre all being close by. Richmond train station offers access to and from London by tube or rail via the District line, South Western trains & London Overground service.

Features

- Two Double Bedrooms
- Popular Mansion Block
- Richmond Hill
- Modern Kitchen
- Spacious Reception Room
- Vineyard Primary Catchment



Richmond Hill Court, TW10

The property is entered via a communal entrance hall with secure entry phone system and provides lift and staircase access to the third floor communal landing with door into the property.

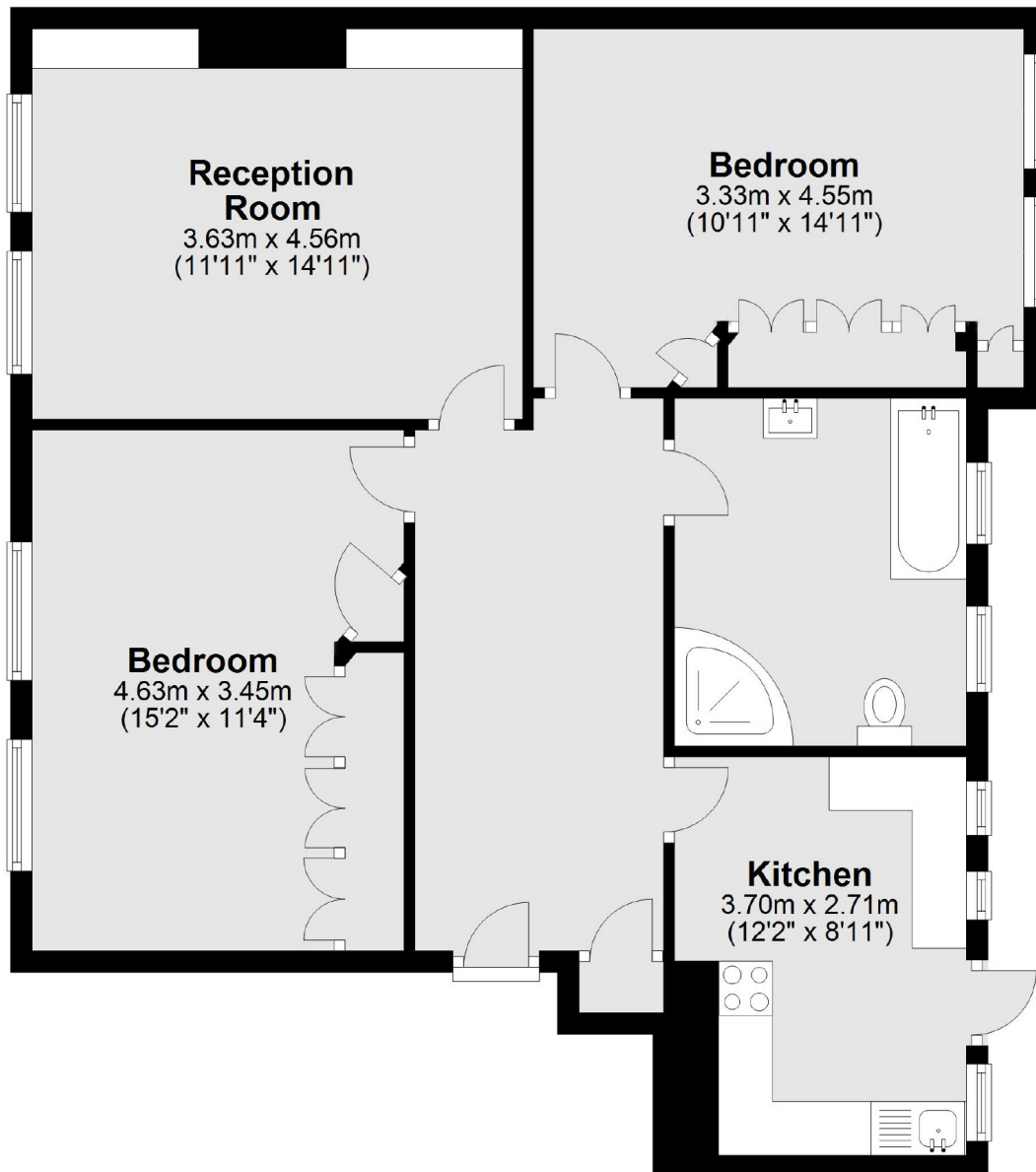
The accommodation comprises a wide entrance hall, a spacious reception, a stylish and contemporary kitchen, two large double bedrooms, and a large, modern bathroom. The development also offers on-site porter, residents tennis court and residents parking.

Some of the area's best schools are located close by, in particular the Vineyard Primary School which is described as 'Outstanding' in the latest Ofsted Report which is located on Friars Stile Road.



Richmond Hill Court, Richmond, TW10

Third Floor



Total area: approx. 81.7 sq. metres (879.5 sq. feet)