



Sandycombe Road, TW9

£725,000

Presenting this spacious split level flat in the heart of Kew. The property has been renovated throughout, comprised of three double bedrooms, two bathrooms, a large open plan kitchen reception room all laid out over approximately 1283 sqft, with a spacious roof terrace and basement.

The flat is offered to the market with a new long leasehold interest and no onward chain.

Sandycombe Road is ideally located for the shops and restaurants of Kew Village, as well as the Royal Botanic Gardens Kew and Richmond Park. The commuter is equally well catered for with Kew Gardens, Richmond

Features

- Three Double Bedrooms
- No Onward Chain
- Modern
- Period Features
- Split Level
- Large Private Terrace



Sandycombe Road, TW9

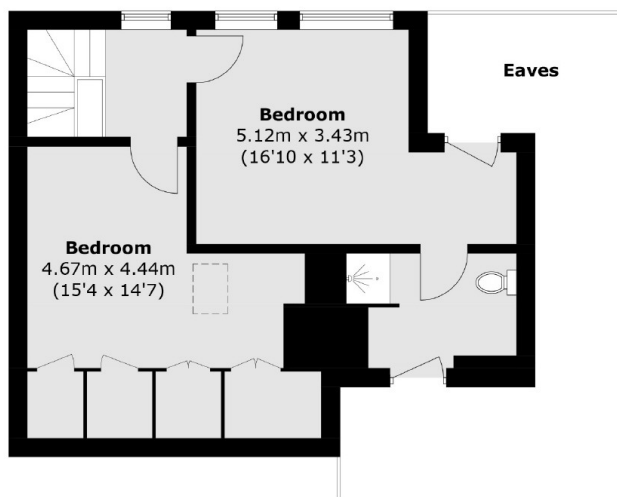
Accessed through a private entrance on the ground floor, this characterful property seamlessly blends period charm with contemporary living.

The bright and spacious open-plan kitchen and reception area showcases beautifully preserved original features, including exposed wooden beams and painted brickwork that enhance the home's distinctive Victorian aesthetic.

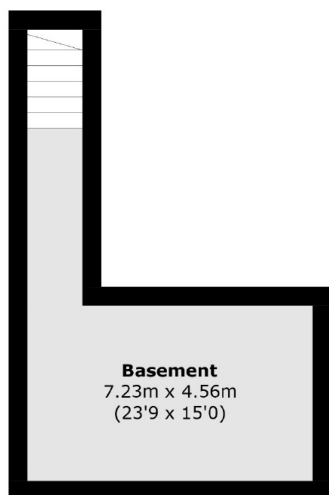
The modern, well-appointed bathroom is complemented by ample built-in storage throughout the property, ensuring both style and functionality. A highlight of the home is the private, west-facing roof terrace ideal for relaxing or entertaining while enjoying afternoon sun. Additionally, the property benefits from the exclusive use of a generous basement storage area, offering practical space rarely found in similar homes.



Sandycombe Road, Kew, TW9



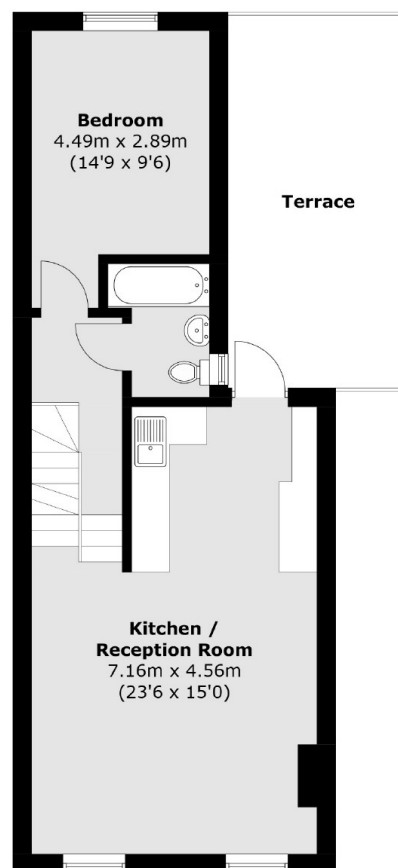
Second Floor



Basement



Ground Floor



First Floor

Total area (approx.): 119.2 sq. m (1,283.0 sq. ft)
Terrace: 17.2 sq. m (185.1 sq. ft)
(Excluding Eaves)