



Mount Ararat Road, TW10

£600,000

Dexters



Mount Ararat Road, TW10

Located on the second floor of this popular purpose built block, this well presented apartment offers spacious lateral living on Richmond Hill. Coming complete with an allocated car port, this property would be ideal for those looking for low maintenance living in a prime position in Richmond.

The property is entered via a well maintained communal entrance hall with entryphone system, with staircase leading up to the second floor apartment.

The accommodation consists of an entrance hall which leads to a spacious open plan kitchen and reception room flooded with natural light and views over towards Kew. There are two spacious double bedrooms and a modern family bathroom.

Outside to the front is a well maintained communal garden and to the rear is the allocated car port. The property is to be sold with a share of the freehold.

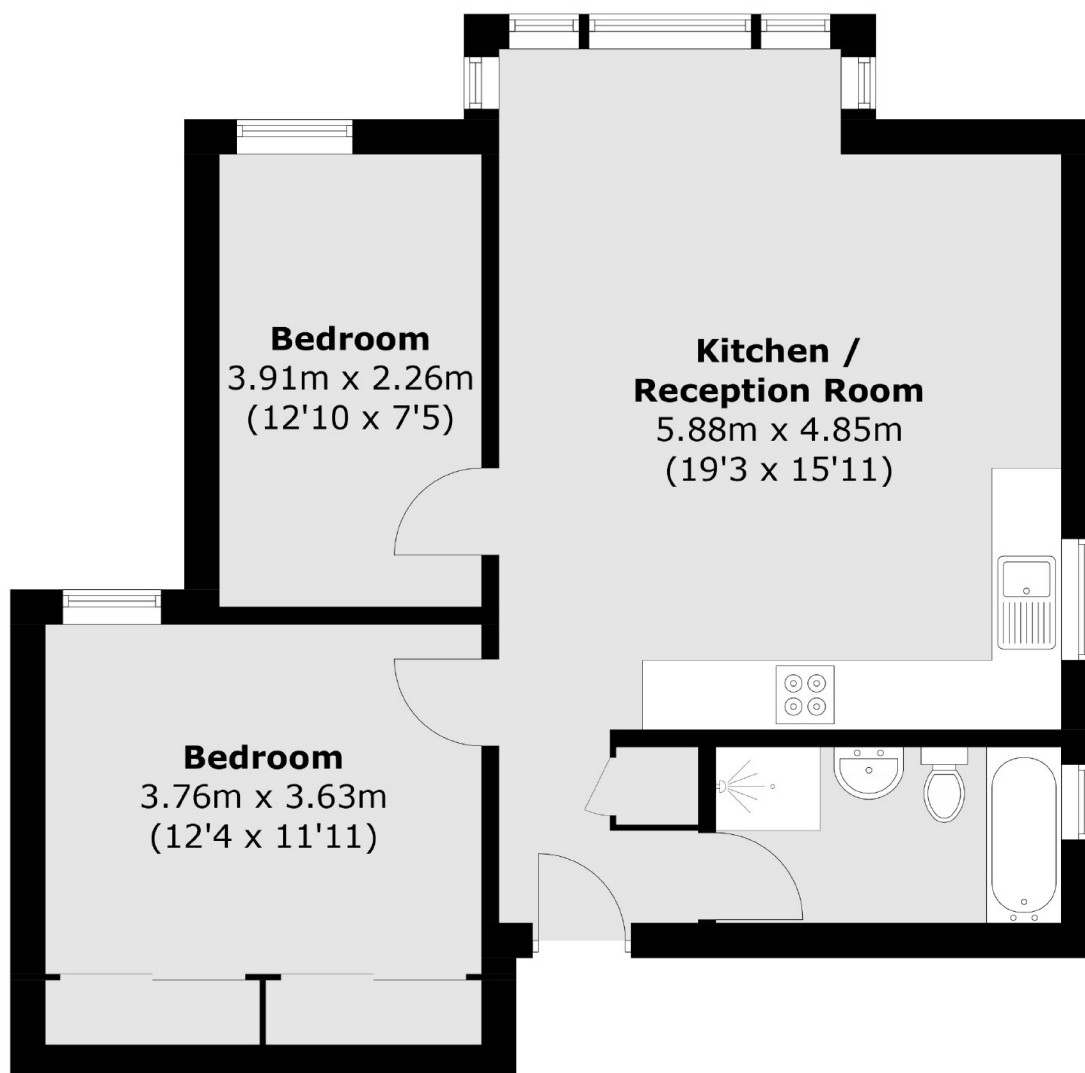
Situated on Mount Ararat Road, the property is well located for the amenities on Richmond Hill, with Richmond Park, Richmond Riverside and Richmond town centre all being close by. Richmond train station offers access to and from London by tube or rail via the District line, South West trains and the London Overground service.

Features

- Two Double Bedrooms
- Car Port
- Modern Kitchen
- Modern Family Bathroom
- Richmond Hill
- Share Of Freehold



Mount Ararat Road, Richmond, TW10



Total area (approx.): 58.8 sq. m (632.9 sq. ft)

Dexters

Richmond
1 Sheen Road
Richmond
TW9 1AD
Sales
020 8288 9988

Energy Rating: D. We aim to make our particulars both accurate and reliable. However they are not guaranteed; nor do they form part of an offer or contract. If you require clarification on any points then please contact us, especially if you're traveling some distance to view. Please note that appliances and heating systems have not been tested and therefore no warranties can be given as to their good working order.

 **RICS** | Regulated
Estate Agent
and Letting Agent

[dexters.co.uk](https://www.dexters.co.uk)