



Crown Terrace, TW9

£465,000

A beautifully presented end of terrace split level purpose built maisonette offering 738 sq ft of accommodation over the ground and first floors. Tube and rail services into London via the District Line, South West Trains and London Overground are available from Richmond station.

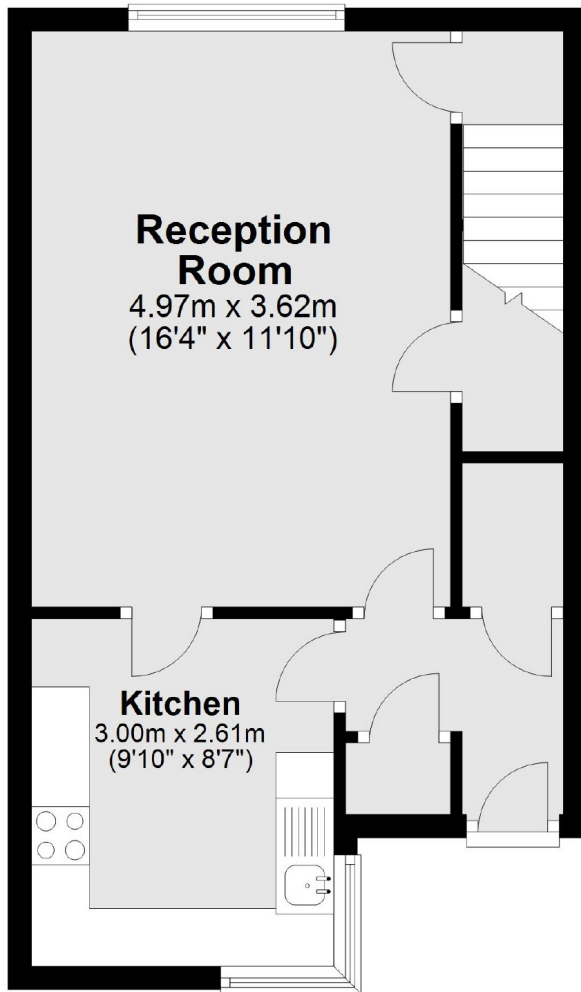
Crown Terrace provides great access to the town centre of Richmond where a plethora of fine restaurants and eateries can be found amongst a vast array of shops, outstanding transport links, the River Thames, Richmond Green and Richmond Park. Whilst also being conveniently situated beside the Royal Botanic Gardens, Kew and the Old Deer Park area.

Features

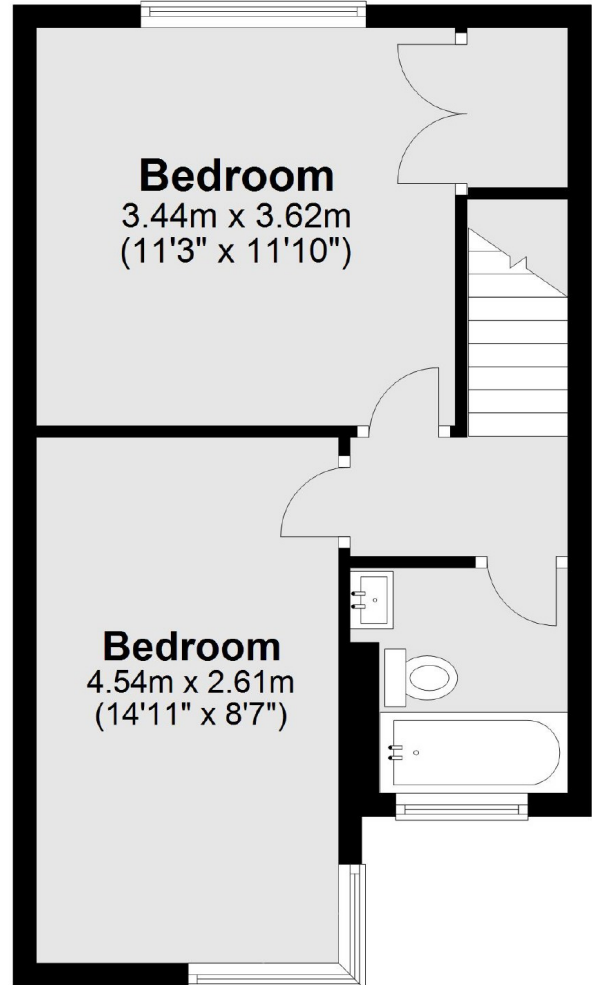
- Purpose Built Maisonette
- Two Double Bedrooms
- Reception Room
- Fitted Kitchen
- Family Bathroom
- Ample Residents Parking

Crown Terrace, Richmond, TW9

Ground Floor



First Floor



Total area: approx. 68.6 sq. metres (738.4 sq. feet)