



Petersham Road, TW10

£3,995 Per calendar month

Petersham is Richmond boroughs hidden gem. With the majority of the area consisting of natural greenery and with beautiful Georgian and Victorian architecture to the houses, it feels like the quintessential English country village.

The area is a paradise for cycling, running and walking and is also home to the Ham Polo Club and four excellent schools, including Grey Court, The German School & The Russell School. Richmond Park and the Thames are a stroll away.

Features

- Two Bedrooms
- Bright & Spacious
- Victorian & Georgian Features
- Large Garden
- Out House
- Petersham



Petersham Road, TW10

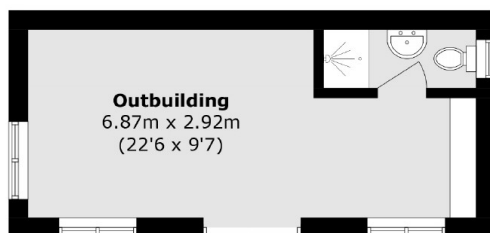
The property offers wooden flooring throughout, an open plan reception room that leads onto the kitchen/ dining area with doors leading out onto the garden .

The garden has direct access to a courtyard via the patio doors from the kitchen / dining area. In the garden there is an out house that offer shower room and kitchenette faculties and a separate sizable shed that can be used for storage or even a workshop.

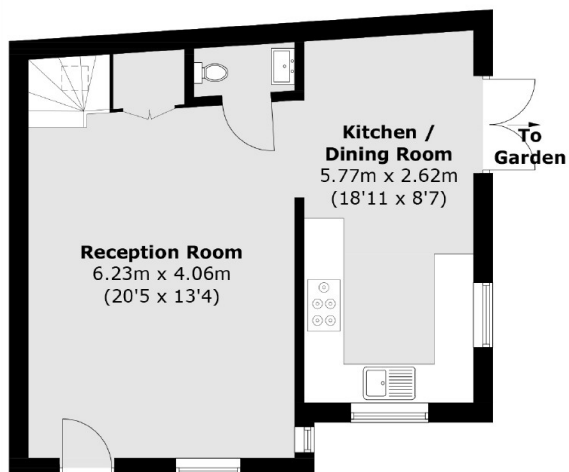
The first floor offers two double bedrooms and a family bathroom. The property also offers access to a cellar that can be used for storage and there is also off street parking.



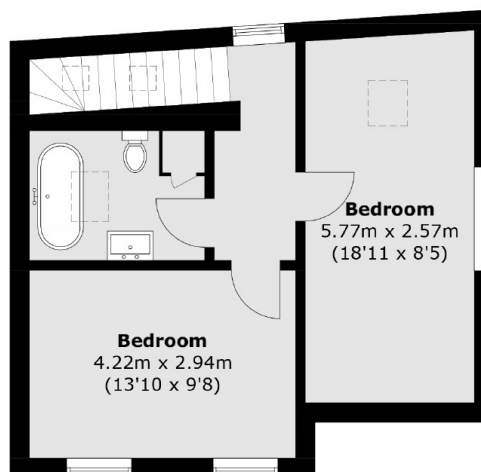
Petersham Road, Petersham, TW10



(Not Shown In Actual
Location / Orientation)



Ground Floor



First Floor

Total area (approx.): 83.0 sq. m (893.3 sq. ft)
Outbuilding (approx.): 20.2 sq. m (217.4 sq. ft)