



Pagoda Avenue, TW9

£1,895 Per calendar month

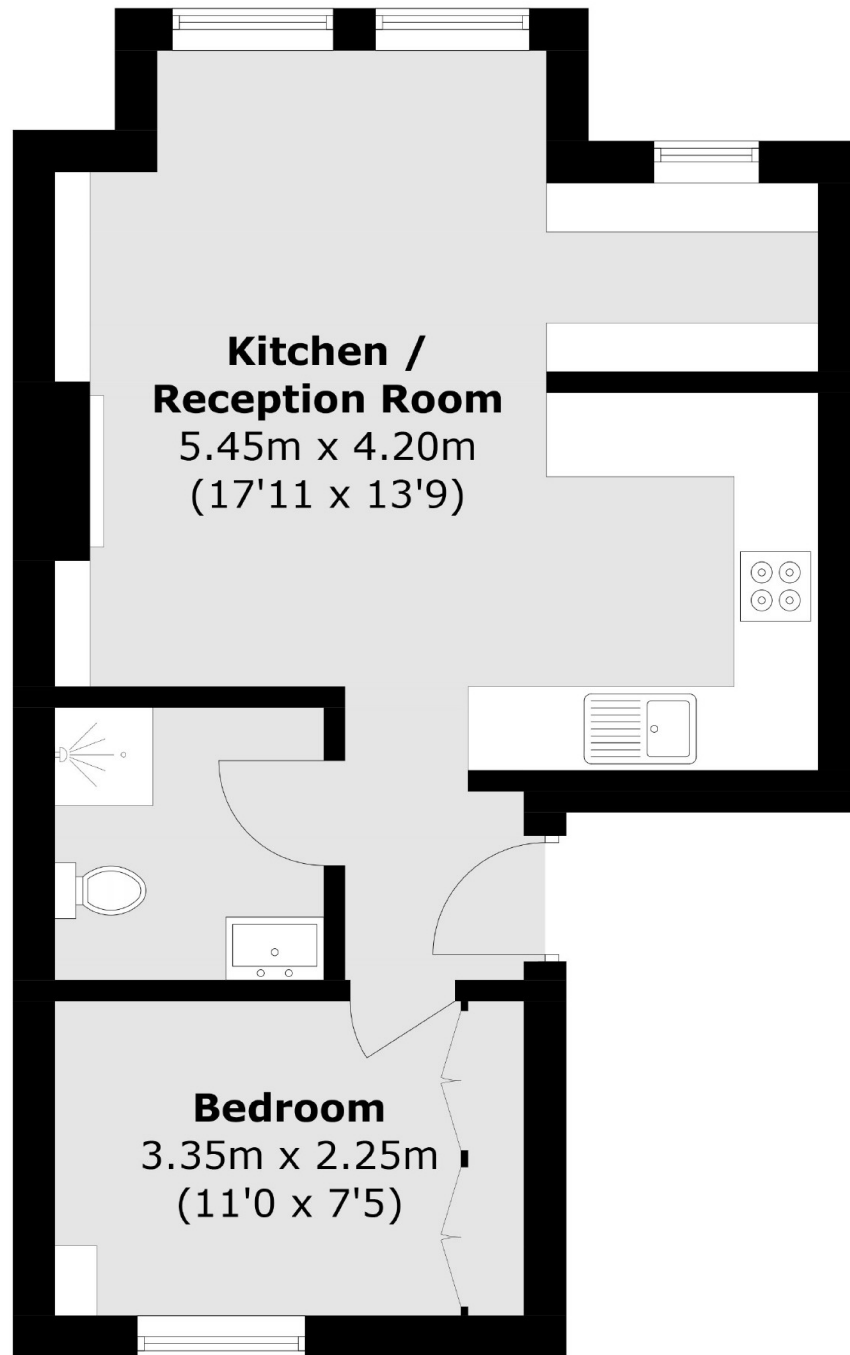
One bedroom apartment close to central Richmond and Kew Gardens.

Located close to Richmond town centre and Kew, offering a wealth of local attractions such as the scenic Kew Gardens, Richmond Park, Richmond Green, and the riverside. The area is also home to excellent schools, boutique shops, cafes, bars, and restaurants. Richmond station, just 0.6 miles away, provides easy access to mainline trains to Waterloo, the Overground, and the District Line.

Features

One Bedroom
Modern Kitchen
Integrated Appliances
Richmond Town Centre
Double Bedroom
First Floor

Pagoda Avenue, Richmond, TW9



Total area (approx.): 38.8 sq. m (417.6 sq. ft)

Dexters

Richmond
1 Sheen Road
Richmond
TW9 1AD
Lettings
020 8288 0828

Energy Rating: E. We aim to make our particulars both accurate and reliable. However they are not guaranteed; nor do they form part of an offer or contract. If you require clarification on any points then please contact us, especially if you're traveling some distance to view. Please note that appliances and heating systems have not been tested and therefore no warranties can be given as to their good working order.

 **RICS** | Regulated
Estate Agent
and Letting Agent

[dexters.co.uk](https://www.dexters.co.uk)