



## Petersham Road, TW10

£1,850 Per calendar month

A spacious one bedroom apartment in fantastic condition in a modern building which is situated on the Petersham Road.

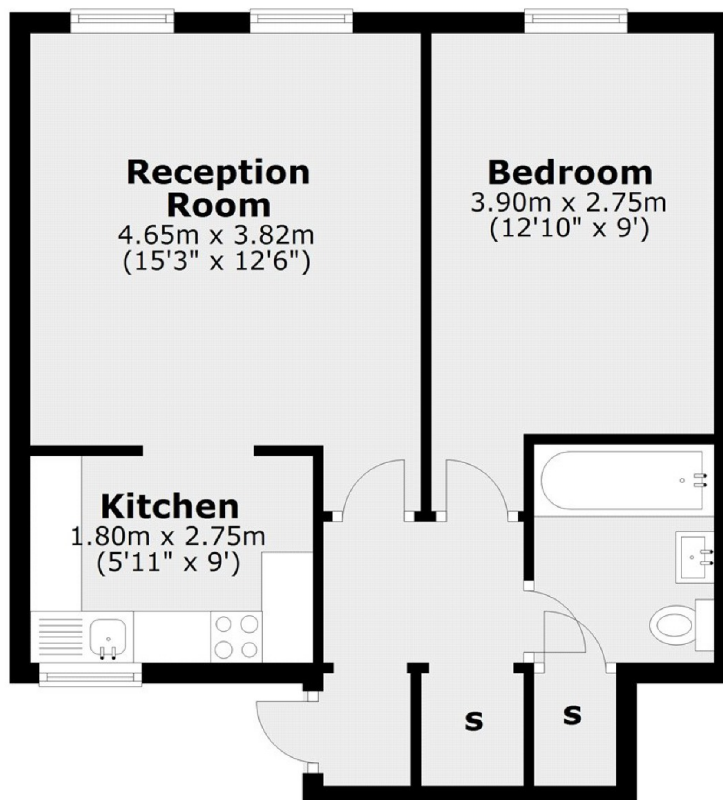
Perfectly positioned on Petersham Road, close to the shops, restaurants and bars of Richmond town centre and within easy reach of Terrace Gardens and Richmond Park.

### Features

- Central Location
- Wooden floors
- Large Master Bedroom
- Modern Bathroom
- Ample Storage
- Bright and Spacious

**Petersham Road,  
Richmond, TW10**

## **First Floor**



Total area: approx. 43.5 sq. metres (468.0 sq. feet)