



Hyde Road, TW10

£2,500 Per calendar month

A two bedroom cottage situated in the ever popular Alberts development. This property offers a good size reception room, a spacious kitchen and modern bathroom.

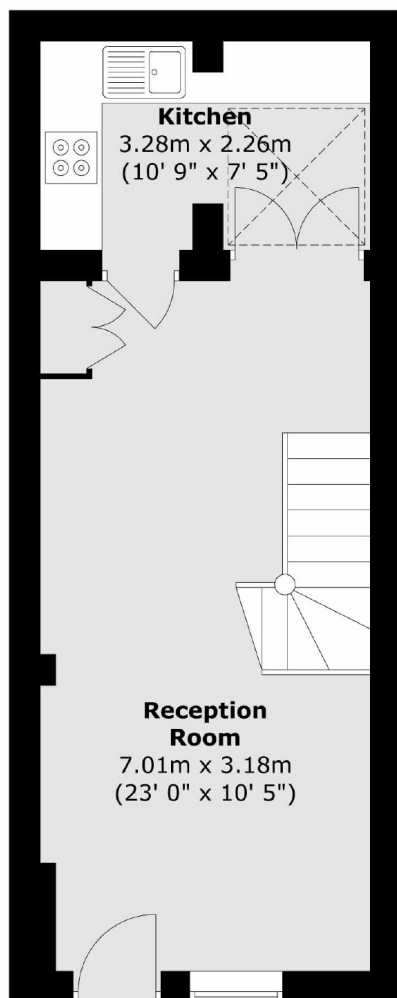
Hyde Road Is located close to Richmond town centre, Richmond mainline station and the many local shops, bars and restaurants within The Alberts.

Features

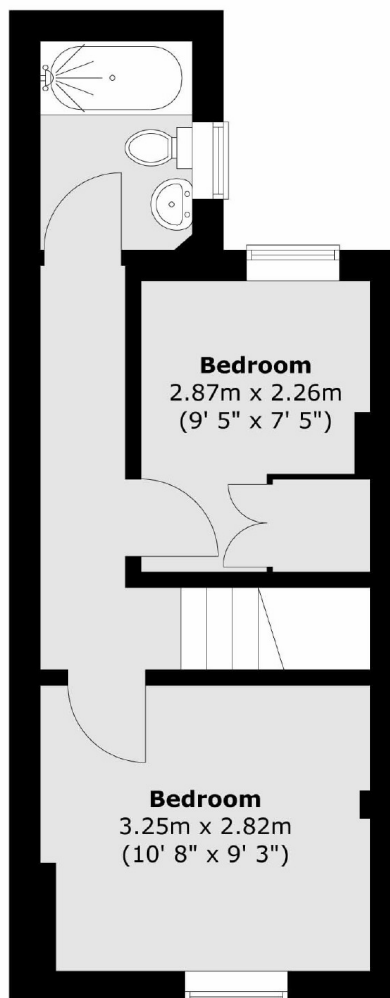
Two Bedrooms
Alberts Cottage
Spacious Kitchen
Modern Bathroom
Great Location

Hyde Road, Richmond, TW10

Ground Floor



First Floor



Total area (approx.) : 55.6 sq. m (599 sq. ft)