



## Thompson Avenue, TW9

£1,095,000

Offering 1,316 sq ft of accommodation is this beautifully presented end of terrace house. The property offers spacious accommodation arranged over three floors and would make a perfect home for a family.

Thompson Avenue is ideally located for Richmond Park and Royal Botanic Gardens Kew. The commuter is equally well catered for with Richmond, Kew Gardens and North Sheen stations close to hand with additional excellent bus services to Central London.

### Features

- Three Double Bedrooms
- Two Bathrooms
- Two Reception Rooms
- Open Plan Kitchen/Diner
- Large Private Garden
- End Of Terrace





## Thompson Avenue, TW9

The ground floor accommodation consists of a porch leading through to the entrance hall with downstairs WC, a cosy front reception room, a separate utility room, and an impressive open plan second reception room come dining room come kitchen with wood burner and bi-fold doors leading out to the rear garden, all of which occupies the rear extension.

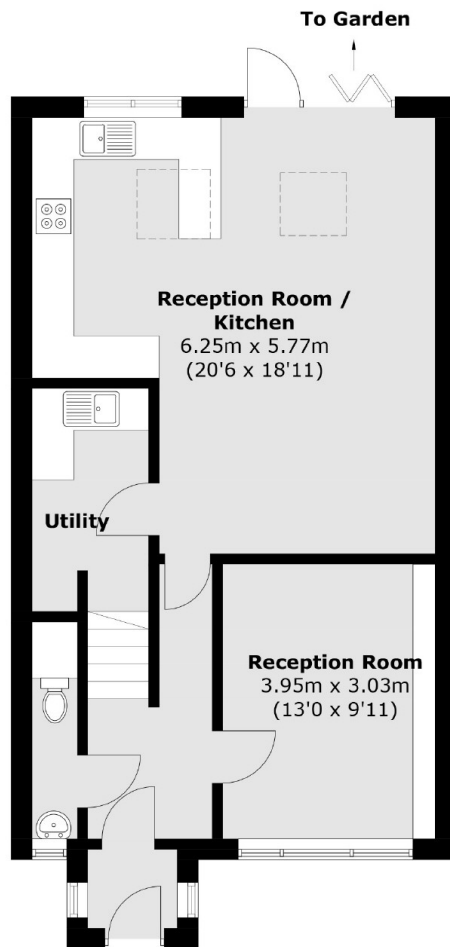
The first floor consists of a landing, a large double bedroom with built-in wardrobes, a second smaller double bedroom and a modern family bathroom. The second floor comprises a master suite with ensuite and built-in wardrobes, and an extra area within the eaves which is currently being utilised as a dressing area.

Outside to the rear is a large East facing private garden which is laid to lawn, paving and decking, and provides access via a side gate the front of the property. The outlook from the rear of the house is uninterrupted views over the peaceful, tree bordered North Sheen Cemetery. To the front is a pretty garden entrance laid with Victorian style tiles and gravel.

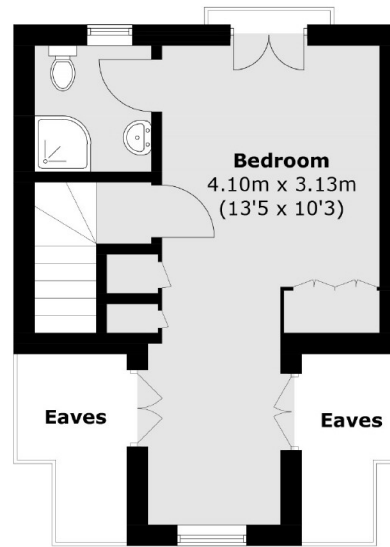




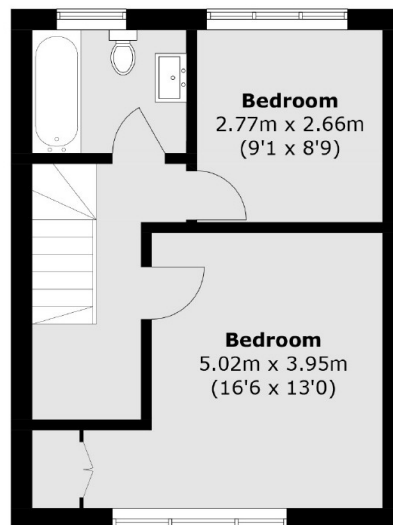
# Thompson Avenue, Richmond, TW9



**Ground Floor**



**Second Floor**



**First Floor**

Total area (approx.): 122.3 sq. m (1,316.4 sq. ft)  
(Excluding Eaves)