



Hyde Road, TW10

£650,000

A well presented two bedroom cottage situated in the ever popular Alberts offers a good size reception room, a spacious kitchen and modern bathroom.

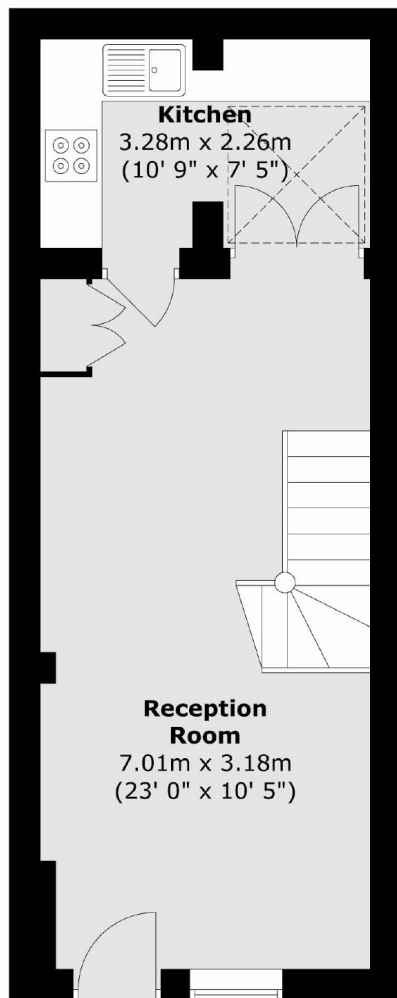
Hyde Road, situated just off The Alberts, has a thriving community that enjoys various amenities including café's, pubs and parks on the door step. Richmond station is approximately 0.5 miles away and provides an excellent over ground and underground service.

Features

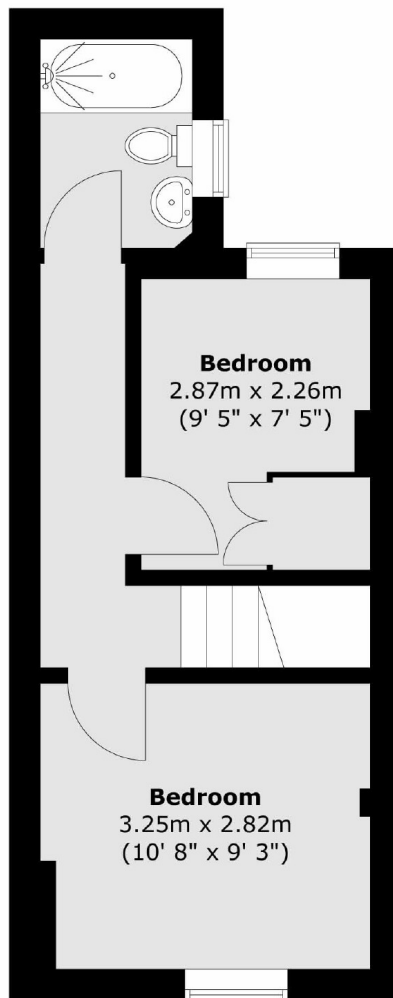
- Two Bedrooms
- Alberts Cottage
- Spacious Kitchen
- Modern Bathroom
- Well Presented
- Great Location

Hyde Road, Richmond, TW10

Ground Floor



First Floor



Total area (approx.) : 55.6 sq. m (599 sq. ft)