



## Chaucer Avenue, TW9

### £995,000

Offering 1,124 sq ft of accommodation is this spacious 3-bed family home. The property offers a buyer the scope, subject to planning permission, to extend into the loft and on the ground floor to create a spectacular property over three floors.

Chaucer Avenue is ideally located for Richmond Park and Royal Botanic Gardens Kew. The commuter is equally well catered for with Richmond, Kew Gardens and North Sheen stations close to hand with additional excellent bus services to Central London.

### Features

- Three Double Bedrooms
- Two Reception Rooms
- Open Plan Kitchen/Diner
- Large Private Garden
- No Forward Chain
- Loft Extension STPP





## Chaucer Avenue, TW9

The ground floor accommodation consists of an entrance hall, two spacious reception rooms, a fitted kitchen/dining room, and separate conservatory room. French doors lead from the conservatory to the rear garden.

The first floor consists of a landing, three double bedrooms and a family bathroom. The property offers a buyer the scope, subject to planning permission, to extend into the loft to create a master bedroom and en-suite.

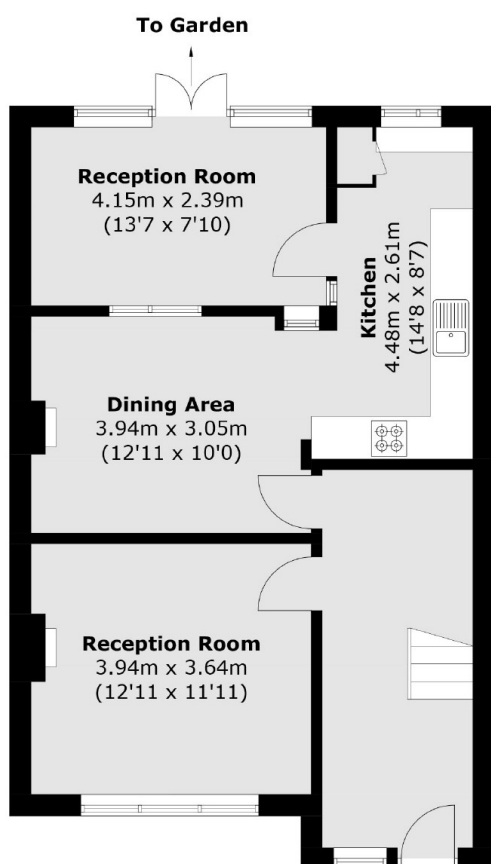
Outside to the rear is a large west-facing private garden, with a small garden to the front of the property.



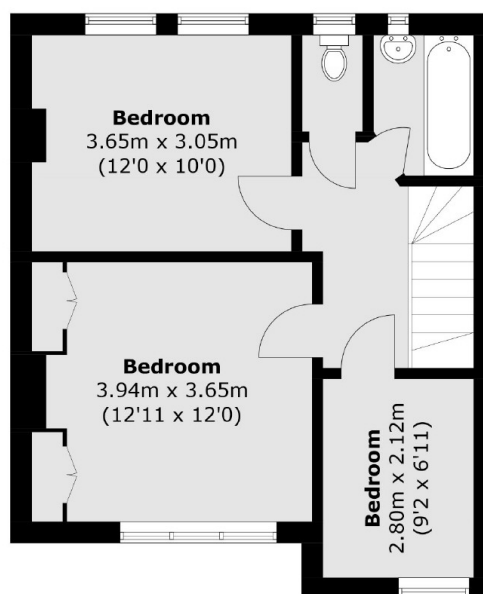




# Chaucer Avenue, Kew, TW9



**Ground Floor**



**First Floor**

Total area (approx.): 104.4 sq. m (1123.8 sq. ft)