

Sheen Road, TW9

£1,595 Per calendar month

Studio apartment in Lichfield Court finished to an exceptional standard. The property comes with contemporary kitchen, integrated appliances, modern bathroom and balcony.

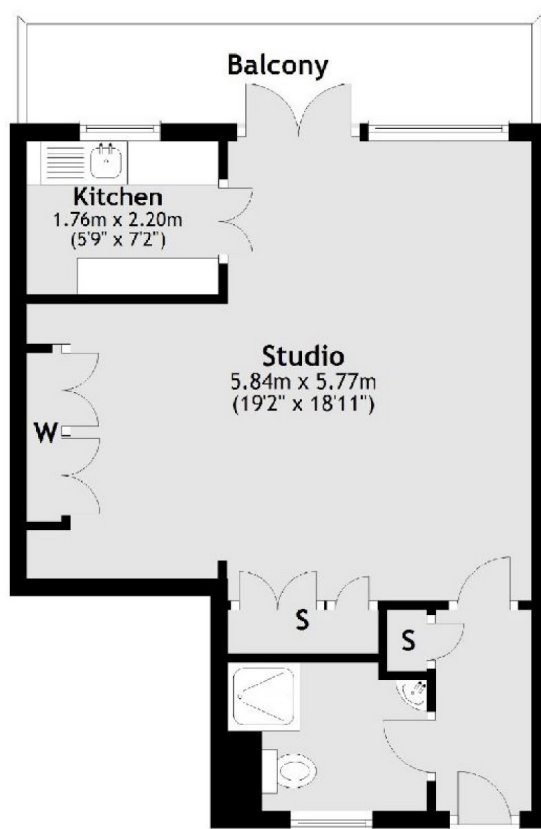
Lichfield Court is a popular development in Richmond town centre. There are beautiful communal gardens and a gate directly into Richmond train station.

Features

- Studio Apartment
- Exceptional Finish
- Porter
- Balcony
- Residents Parking
- Lift

Sheen Road, Richmond, TW9

First Floor



Total area: approx. 38.1 sq. metres (410.0 sq. feet)