



## Mortlake Road, TW9

### £425,000

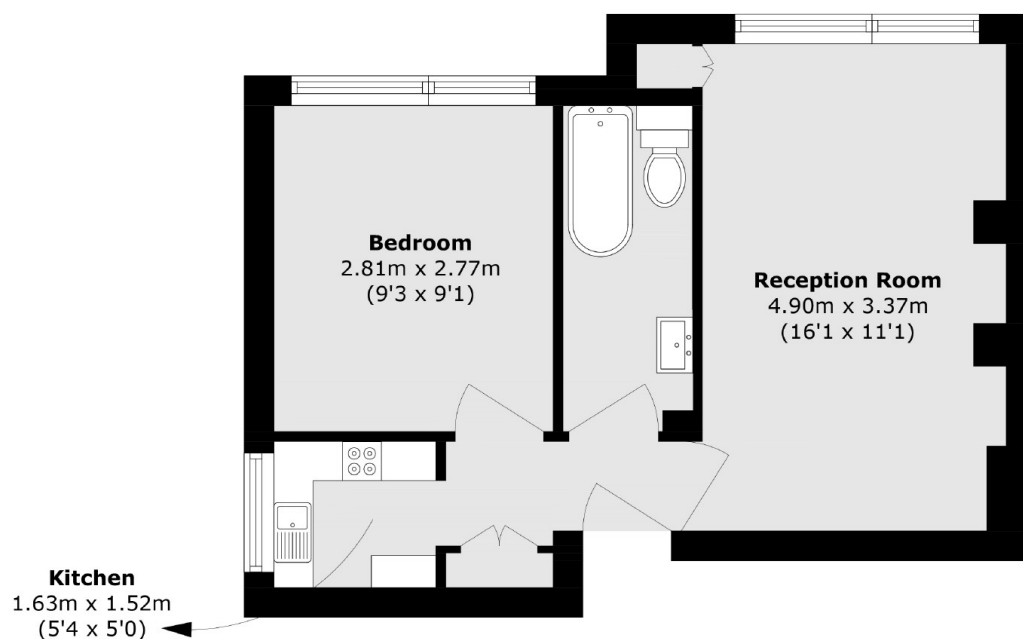
A fantastic opportunity to purchase this modern and spacious period conversion flat, which is laid out over 382 sq ft of accommodation. The property situated on the ground floor comprises one bedroom, one bathroom, a generous reception room and a separate fitted kitchen. The property also comes with an off street parking space to the rear of the building and is offered to the market with a Share of Freehold and no onward chain.

Mortlake Road is ideally located for the Royal Botanic Gardens Kew and Richmond Park. The commuter is equally well catered for with Richmond, Kew Gardens and North Sheen stations close to hand with additional excellent bus services to Central London.

### Features

Period Conversion  
One Bedroom  
Off Street Parking  
Share Of Freehold  
No Onward Chain  
Ground Floor

# Mortlake Road, Kew, TW9



Total area (approx.): 35.5 sq. m (382.1 sq. ft)

## Dexters

Richmond  
1 Sheen Road  
Richmond  
TW9 1AD

Sales  
020 8288 9988

Energy Rating: Tbc. We aim to make our particulars both accurate and reliable. However they are not guaranteed; nor do they form part of an offer or contract. If you require clarification on any points then please contact us, especially if you're traveling some distance to view. Please note that appliances and heating systems have not been tested and therefore no warranties can be given as to their good working order.

 **RICS** | Regulated  
Estate Agent  
and Letting Agent

[dexters.co.uk](https://www.dexters.co.uk)