



Upper Richmond Road West, SW14 £450,000

Set within the ever popular Deanhill Court development is this spacious purpose built apartment. The property comprises two bedrooms, a modern bathroom, a separate kitchen and a large reception room.

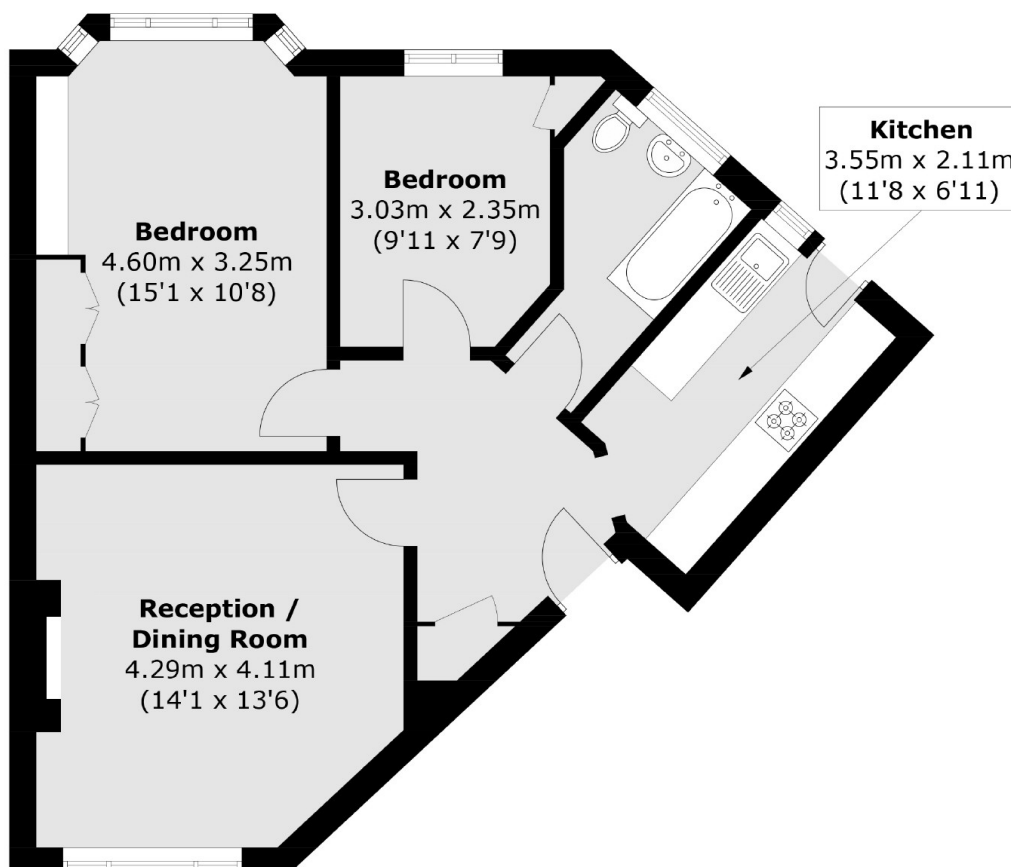
The property is offered to the market with a Share of Freehold, allocated residents parking, low service charge costs, and no onward chain.

Deanhill Court is close to East Sheen high street with an array of shops, restaurants and cafés. Also with easy access to North Sheen, Mortlake and Richmond station.

Features

- Two Bedrooms
- Bright Reception
- Share of Freehold
- Allocated Parking
- Communal Garden
- No Onward Chain

Upper Richmond Road West, London, SW14



Total area (approx.): 59.7 sq. m (642.6 sq. ft)