



Spring Terrace, TW9

£635,000

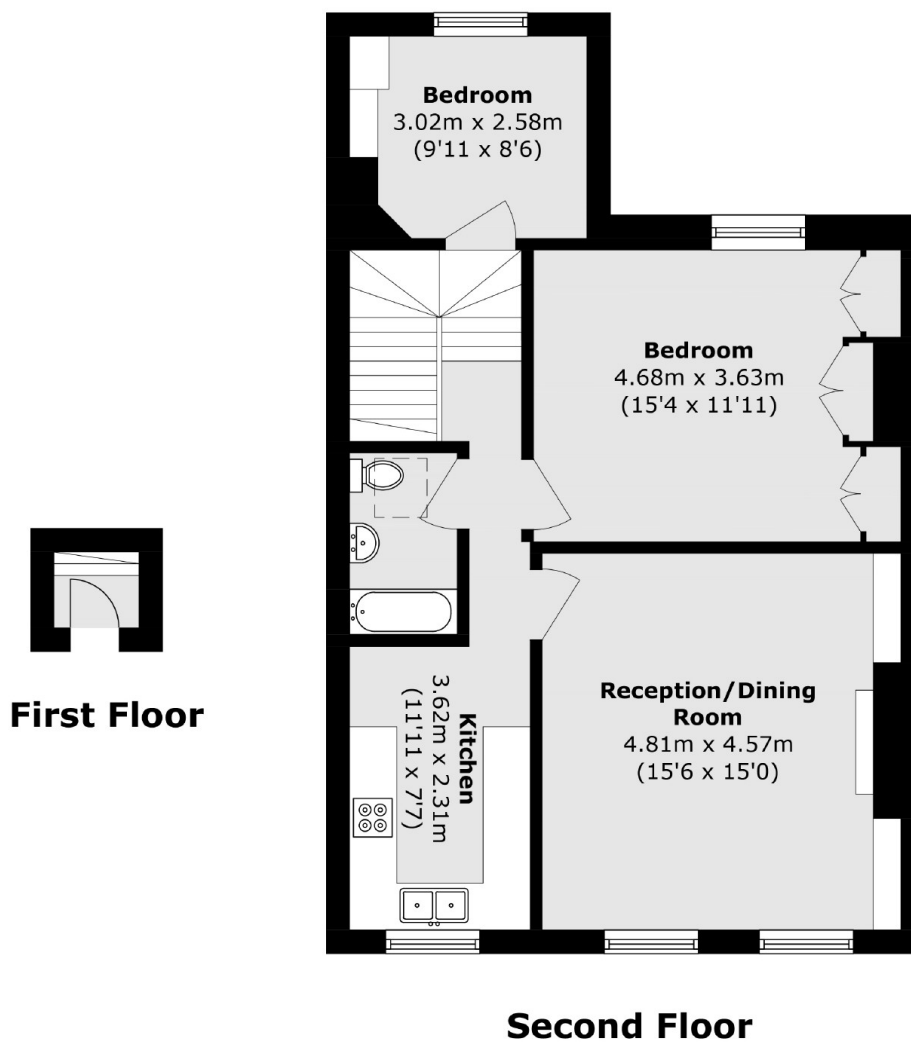
A very well-presented Georgian two bedroom apartment located in a prime position, centrally located. This stunning conversion is offered to the market with a Share of Freehold and no onward chain.

Spring Terrace is conveniently located for the amenities of Richmond Riverside and Richmond town centre all being close by. Richmond train station offers access to and from London by tube or rail via the District line, South Western trains and the London Overground service.

Features

- Centrally Located
- Georgian Conversion
- Share Of Freehold
- No Onward Chain
- Modern Kitchen
- Views Over Richmond

Spring Terrace, Richmond, TW9



Total area (approx.): 69.1 sq. m (743.7 sq. ft)

Dexters

Richmond
1 Sheen Road
Richmond
TW9 1AD
Sales
020 8288 9988

Energy Rating: C. We aim to make our particulars both accurate and reliable. However they are not guaranteed; nor do they form part of an offer or contract. If you require clarification on any points then please contact us, especially if you're traveling some distance to view. Please note that appliances and heating systems have not been tested and therefore no warranties can be given as to their good working order.

RICS | Regulated
Estate Agent
and Letting Agent

[dexters.co.uk](https://www.dexters.co.uk)