



Ham Street, TW10

£625,000

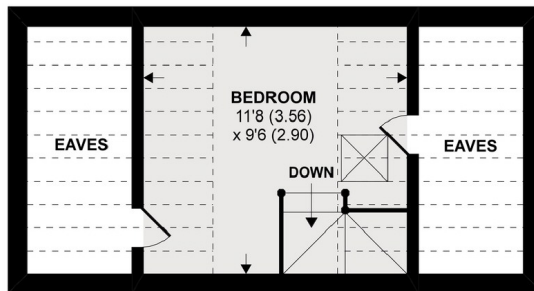
Situated moments from Ham common is this charming three bedroom family home. The property is close to a number of excellent local schools including Greycourt, The German School, Meadlands, St Richards and Tiffin Boys and Girls.

If it's green open spaces you love then this location will not disappoint. With Ham Common, Richmond Park, Petersham Meadows and the River Thames on your doorstep, what more could you want. There is a choice of regular bus services into Richmond and Kingston where can be found train and tube services into Central London.

Features

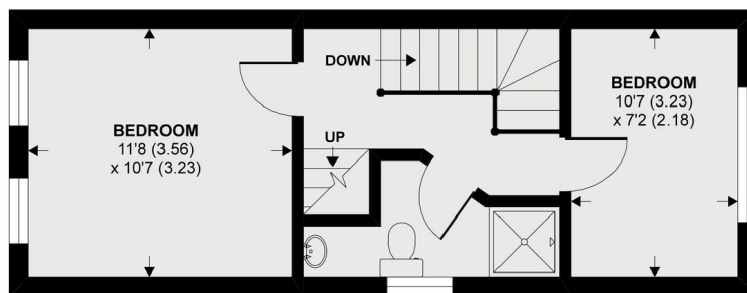
- Two Bedrooms
- Double Reception Room
- End of Terrace
- No Onward Chain
- Private Garden
- Just Off Ham Common

Ham Street, Richmond, TW10

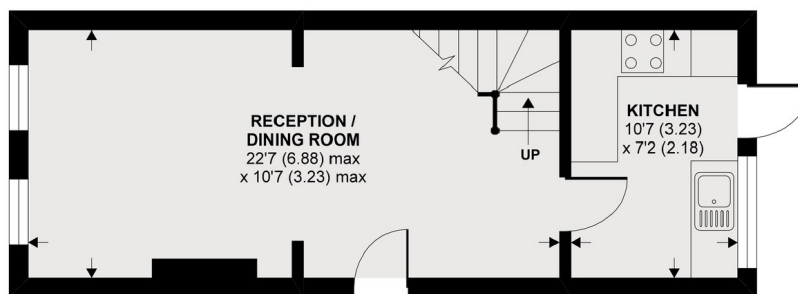


2nd Floor

Denotes restricted
head height



1st Floor



Ground Floor

APPROX FLOOR AREA 774 SQ.FT 71.9 SQ.M (INCLUDES RESTRICTED HEAD HEIGHT & EXCLUDES EAVES)

Copyright nichecom.co.uk 2020 REF : 573467

Dexters

Richmond
1 Sheen Road
Richmond
TW9 1AD

Sales
020 8288 9988

Energy Rating: D. We aim to make our particulars both accurate and reliable. However they are not guaranteed; nor do they form part of an offer or contract. If you require clarification on any points then please contact us, especially if you're traveling some distance to view. Please note that appliances and heating systems have not been tested and therefore no warranties can be given as to their good working order.

 **RICS** | Regulated
Estate Agent
and Letting Agent

dexters.co.uk