



## Manor Grove, TW9

£1,100,000

A spacious three double bedroom family home offering 1,157 sq ft of accommodation. The property is ideally located for Richmond Park and Royal Botanic Gardens Kew.

Manor Grove is well positioned for a number of outstanding Ofsted rated schools including, Sheen Mount, Marshgate and Holy Trinity. The commuter is equally well catered for with Richmond, Kew and North Sheen stations close to hand with additional excellent bus services to Central London.

### Features

- Three Double Bedrooms
- Two Modern Bathrooms
- Period Features Throughout
- Bay Fronted Reception Room
- Extended Kitchen/Dining Room
- Swedish Garden Office



## Manor Grove, TW9

The ground floor accommodation consists of a bay fronted reception room with feature fireplace and Canadian Maple solid wood floors, French doors then lead to an extended kitchen/dining room with bi-fold doors leading to the rear garden.

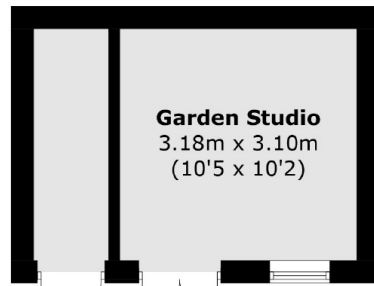
The first floor accommodation comprises a landing, two double bedrooms both with built-in wardrobes and a modern family bathroom. The second floor accommodation consists of a master double bedroom with eaves storage space and a separate modern shower room.

Outside to the front is a small garden with Victorian style mosaic tiles. To the rear is a good sized private garden which provides access to the Swedish made garden office with separate shed.

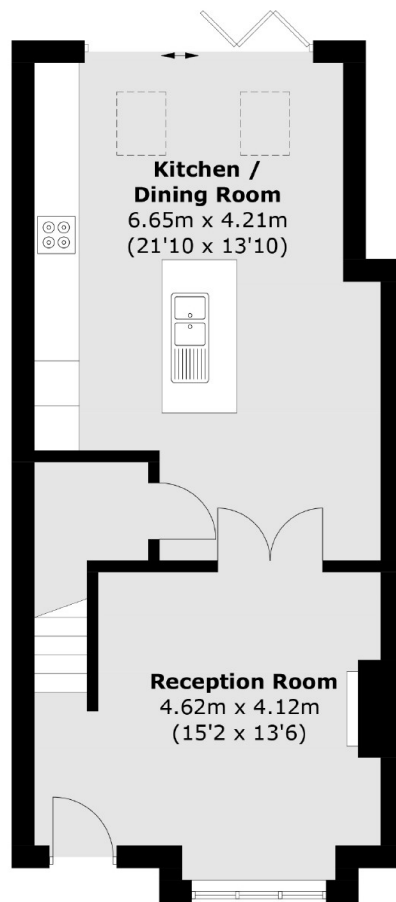




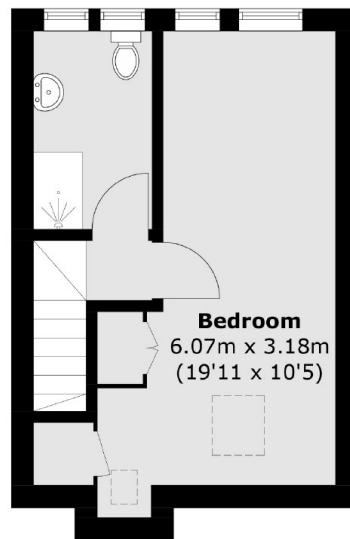
# Manor Grove, Richmond, TW9



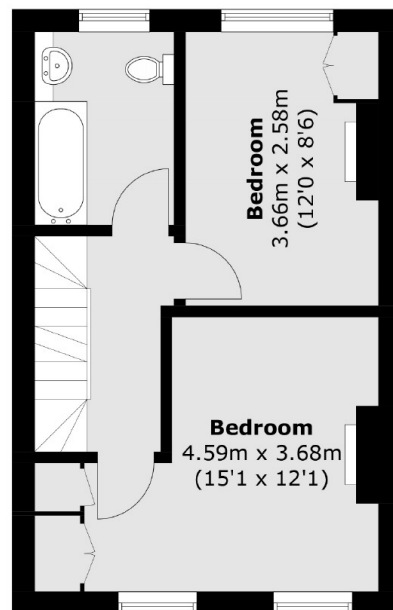
(Not Shown In Actual  
Location / Orientation)



**Ground Floor**



**Second Floor**



**First Floor**

Total area (approx.): 107.5 sq. m (1,157.1 sq. ft)  
Garden Studio (approx.): 13.7 sq. m (147.5 sq. ft)