



Kew Road, TW9

£425,000

Set within the Grade II listed building, Matthiae House, is this bright and spacious one bedroom apartment. The property is laid out over 496 sq ft of accommodation and comprises an entrance hall with storage cupboard, a generous double bedroom, a modern bathroom and an open plan kitchen/living/dining room with french doors leading out onto the large private terrace.

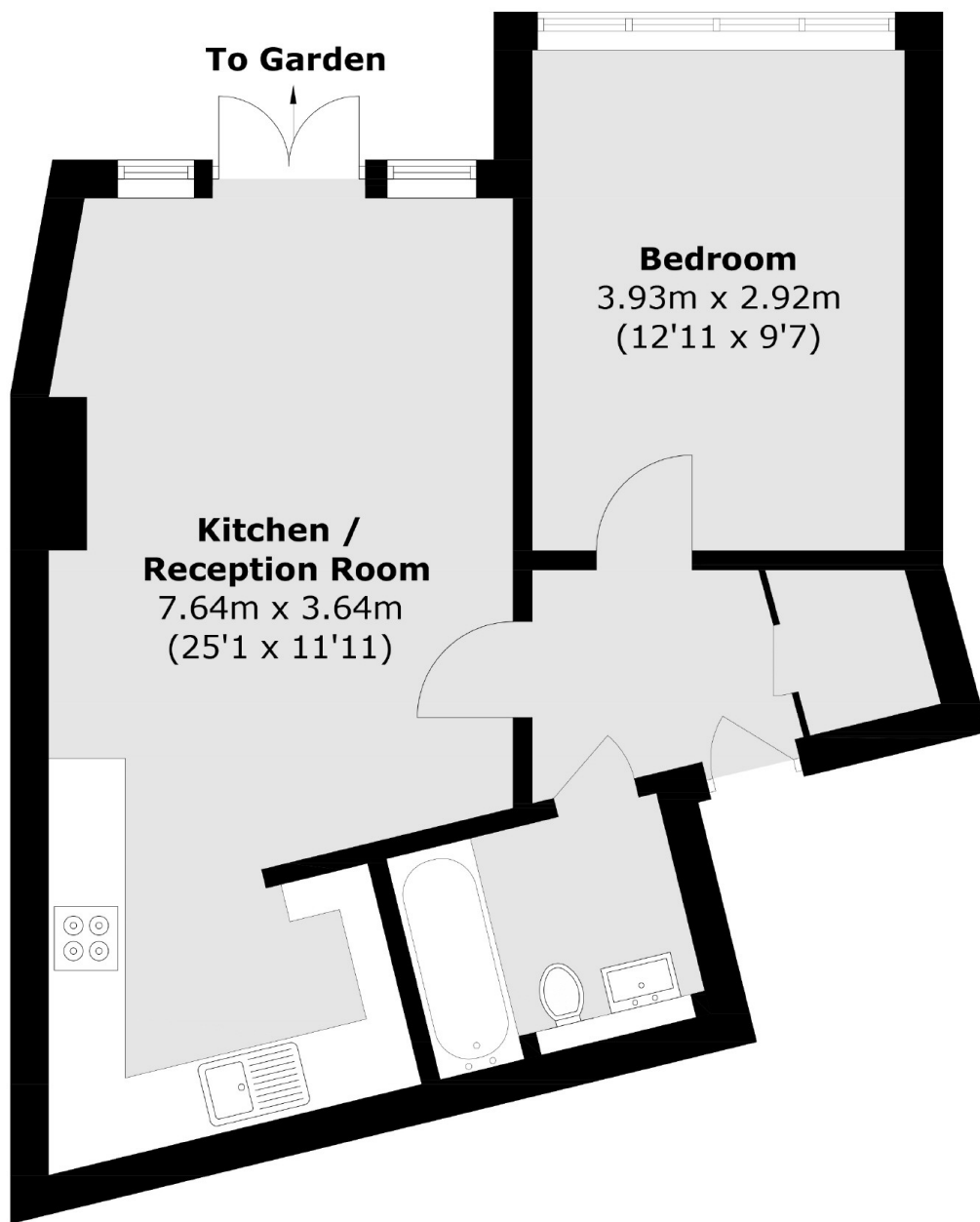
The property is offered to the market with a long leasehold interest and no onward chain.

Kew Road is located just moments away from Richmond's extensive leisure and shopping amenities including numerous bars and restaurants and provides convenient access to Richmond station which offers services to and from London by tube or rail via the District line, South West trains and the London Overground service.

Features

- One Double Bedroom
- Open Plan Reception Room
- Modern Fitted Kitchen
- Modern Bathroom
- Large Private Terrace
- No Onward Chain

Kew Road, Richmond, TW9



Total area (approx.): 46.1 sq. m (496.2 sq. ft)

Dexters

Richmond
1 Sheen Road
Richmond
TW9 1AD
Sales
020 8288 9988

Energy Rating: D. We aim to make our particulars both accurate and reliable. However they are not guaranteed; nor do they form part of an offer or contract. If you require clarification on any points then please contact us, especially if you're traveling some distance to view. Please note that appliances and heating systems have not been tested and therefore no warranties can be given as to their good working order.

 **RICS** | Regulated
Estate Agent
and Letting Agent

[dexters.co.uk](https://www.dexters.co.uk)