



## Eastbourne Gardens, SW14

### £1,225,000

A lovely four bedroom 1930's semi-detached house in the heart of family friendly East Sheen. The house is laid out over 1,474 sq ft, is nearby to many excellent schools including Thompson House and Sheen Mount, and is offered to the market with no onward chain.

The cul-de-sac of Eastbourne Gardens is ideally located for the extensive shopping and leisure amenities of East Sheen including Waitrose and a number of gastro pubs, restaurants and coffee shops together with bus routes giving access to Richmond, Putney, Barnes and Hammersmith. Mortlake mainline station which provides regular services to London Waterloo is also very close by.

### Features

- Semi-Detached
- Four Bedrooms
- Two Bathrooms
- Open Plan Kitchen
- Storage Garage
- No Onward Chain





## Eastbourne Gardens, SW14

The ground floor accommodation comprises a generous entrance hall with staircase leading to the first floor landing, a separate front reception room with bay window and fireplace, and an open plan kitchen/dining room to the rear with french doors leading out to the garden.

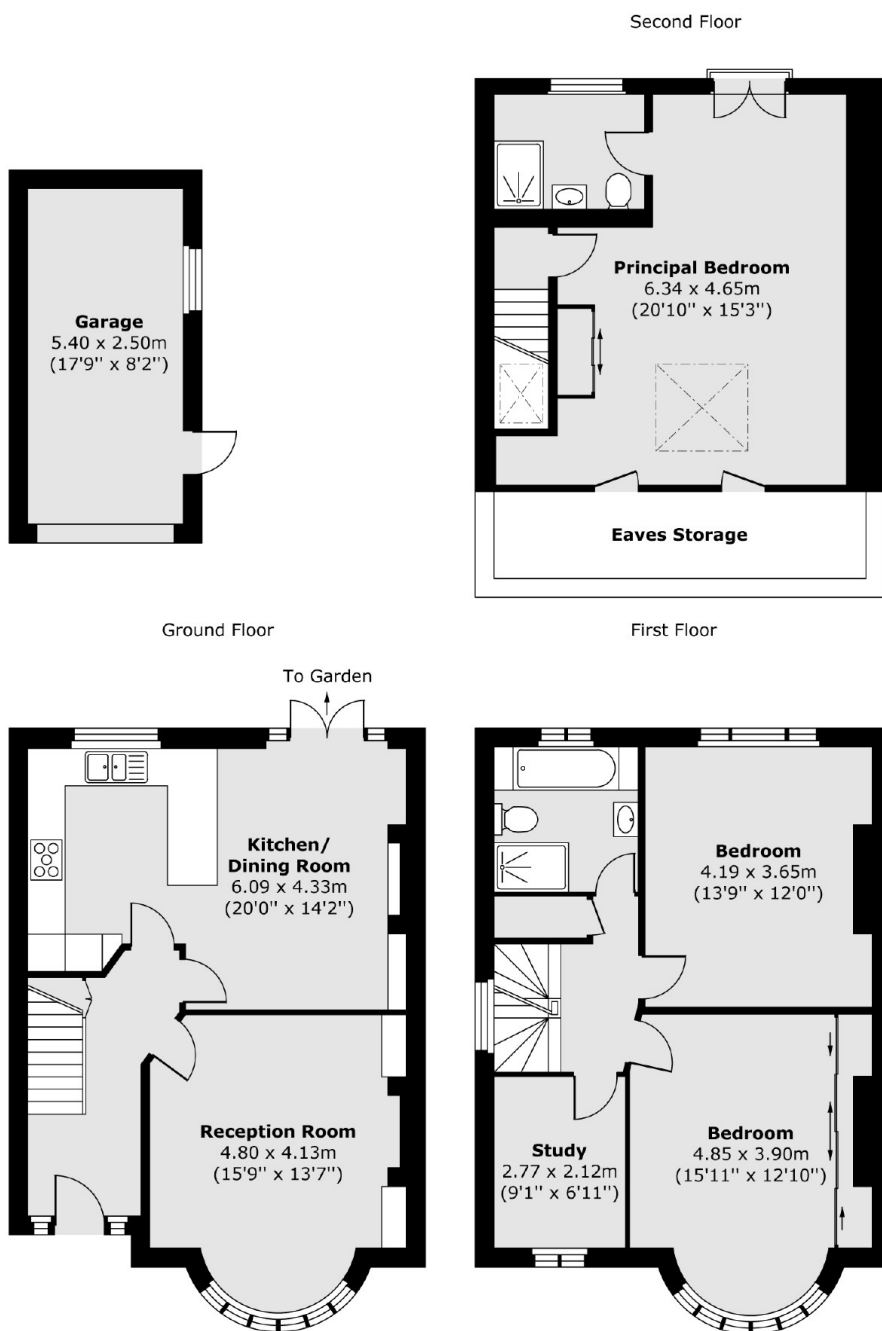
The first floor consists of two large double bedroom, a further smaller bedroom come study and a three piece family bathroom. The second floor consists of the master suite with ample eaves storage, a Juliet balcony and an ensuite bathroom.

To the front is small garden and also side access to the rear garden. To the rear is an east facing garden laid to patio and lawn, and a garage which is currently used as storage.





# Eastbourne Gardens, London, SW14



Total area (approx.) 136.96 sq. m (1,474 sq. ft)  
Garage area (approx.) 13.50 sq. m (145 sq. ft)

## Dexters

Richmond  
1 Sheen Road  
Richmond  
TW9 1AD

Sales  
020 8288 9988

Energy Rating: D. We aim to make our particulars both accurate and reliable. However they are not guaranteed; nor do they form part of an offer or contract. If you require clarification on any points then please contact us, especially if you're traveling some distance to view. Please note that appliances and heating systems have not been tested and therefore no warranties can be given as to their good working order.

 **RICS** | Regulated  
Estate Agent  
and Letting Agent

dexters.co.uk