



## Raleigh Road, TW9

### £999,975

A well presented Victorian family home offering 1,490 sq ft of accommodation over three floors. Tube and rail services into London via the District Line, South West Trains and London Overground are available from Richmond station.

Raleigh Road is perfectly located for Richmond Park and Royal Botanic Gardens Kew. The commuter is equally well catered for with Richmond, Kew Gardens and North Sheen stations close to hand with additional excellent bus services to Central London.

### Features

- Victorian House
- Four Double Bedrooms
- Separate Front Reception Room
- Open Plan Kitchen/Dining
- Two Bathrooms
- No Onward Chain





## Raleigh Road, TW9

The ground floor accommodation consists of an entrance hall with WC and understairs storage, a bay fronted reception room with fireplace, and a large open plan kitchen/dining/reception room which occupies the rear extension with sliding doors leading to the south facing rear garden.

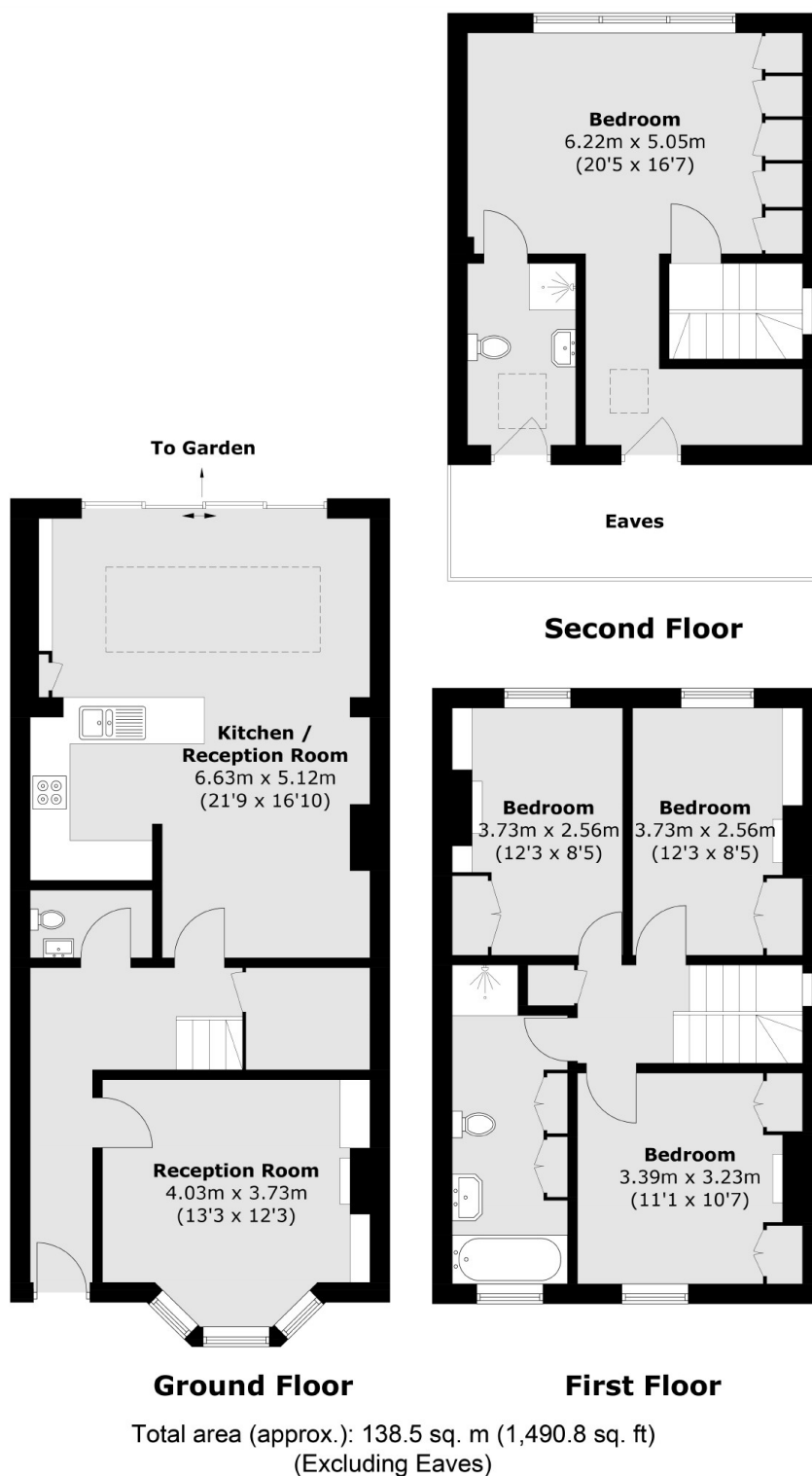
The first floor comprises a landing, three double bedrooms and a family bathroom with separate shower. The second floor consists of the master double bedroom with recessed eaves storage space, an ensuite shower room, and ample built in wardrobes.







# Raleigh Road, Richmond, TW9



## Dexters

Richmond  
1 Sheen Road  
Richmond  
TW9 1AD

Sales  
020 8288 9988

Energy Rating: D. We aim to make our particulars both accurate and reliable. However they are not guaranteed; nor do they form part of an offer or contract. If you require clarification on any points then please contact us, especially if you're traveling some distance to view. Please note that appliances and heating systems have not been tested and therefore no warranties can be given as to their good working order.



dexters.co.uk