



Courtlands, TW10

£595,000

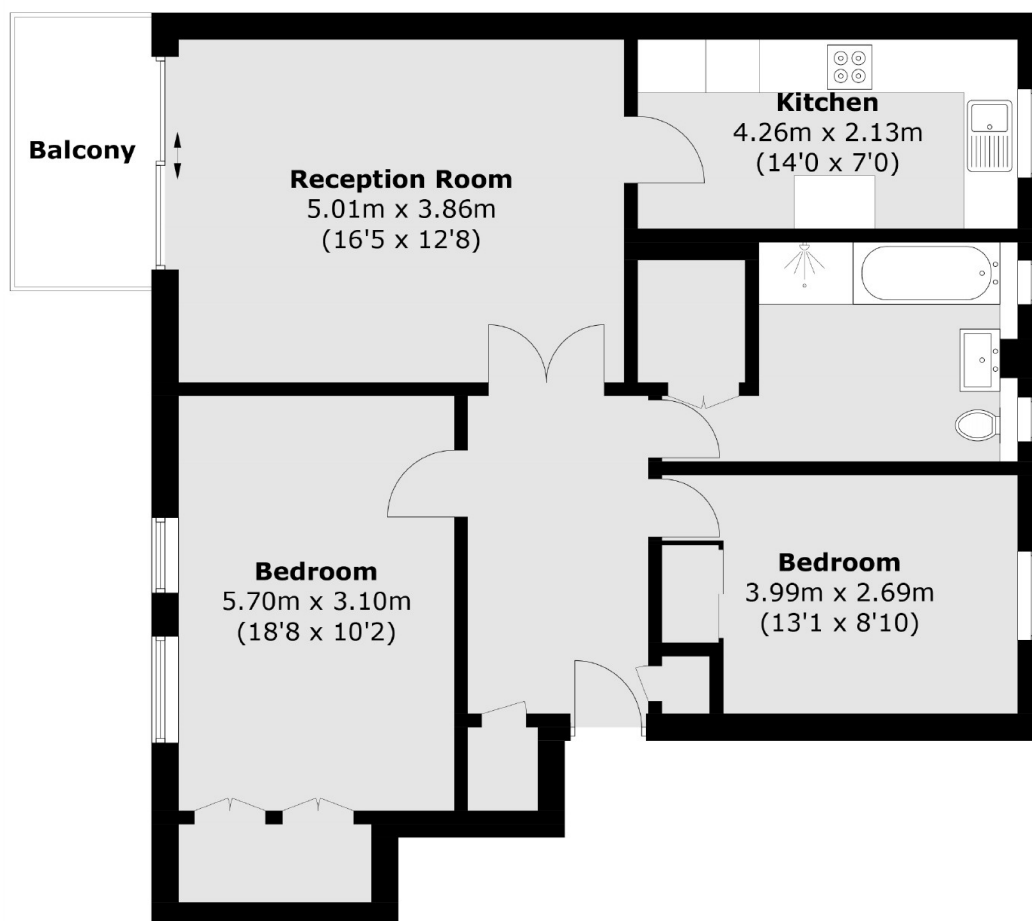
A well presented purpose built apartment offering approximately 846 sq ft of accommodation and enjoys south facing views over the sports fields and towards Richmond Park.

Courtlands is a well maintained private sought after residential development set within extensive communal grounds and benefitting from on-site portage. Richmond and North Sheen stations offer tube or rail services into Central London via the District Line, South West Trains and London Overground.

Features

- Two Double Bedrooms
- Spacious Reception Room
- Modern Fitted Kitchen
- South Facing Private Balcony
- Private Parking
- No Onward Chain

Courtlands, Richmond, TW10



Total area (approx.): 78.6 sq. m (846.0 sq. ft)
Balcony: 4.6 sq. m (49.5 sq. ft)