

## Sheen Road, TW9

£275,000

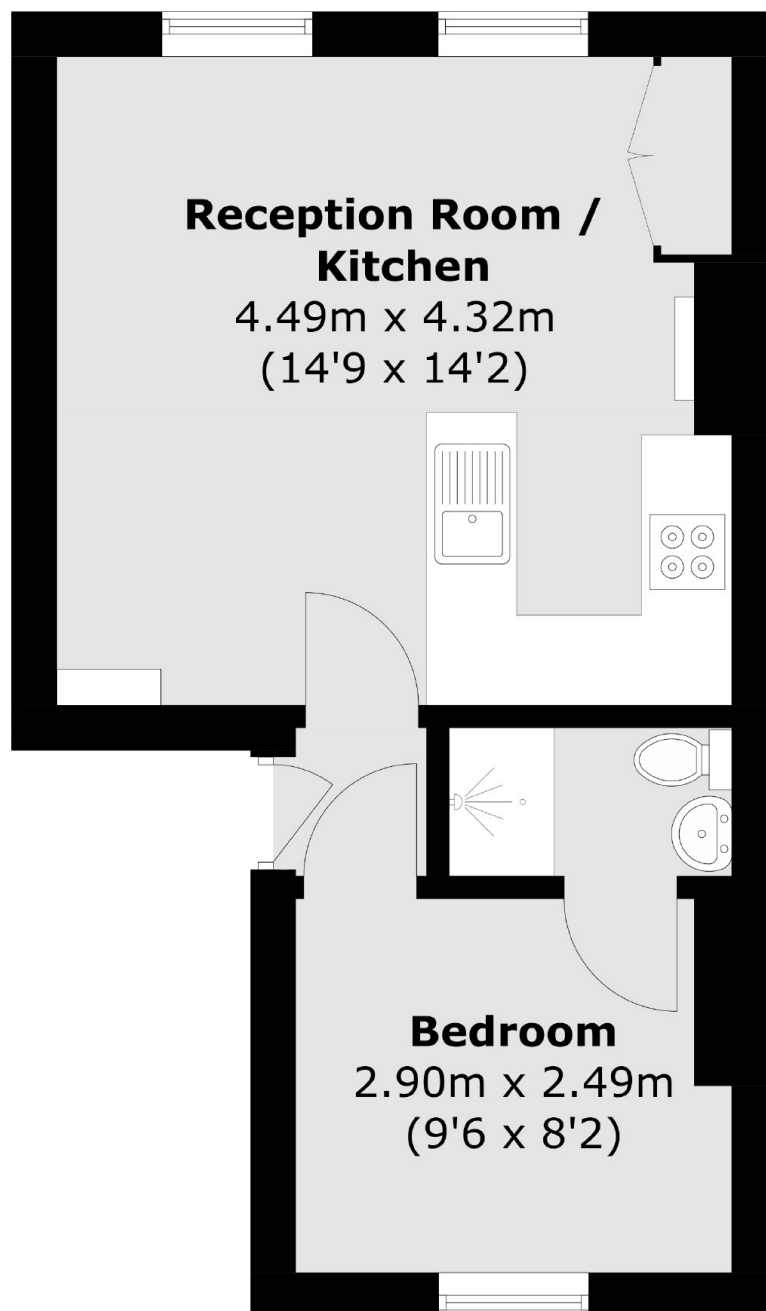
A spacious one bedroom flat located in central Richmond offering an open-plan kitchen/ living area and lots of natural light. This is a great opportunity to own a Victorian converted flat centrally location in Richmond offering a substantial amount of character.

Sheen Road is close to Richmond's extensive leisure and shopping amenities including numerous bars and restaurants. Richmond Station is also close by with its fast links into the city.

### Features

- One Double Bedroom
- Open Plan Living Space
- Natural Light
- Bathroom
- Good Size Bedroom
- Central Richmond

# Sheen Road, Richmond, TW9



Total area (approx.): 30.5 sq. m (328.3 sq. ft)