

Garden Road, TW9

£450,000

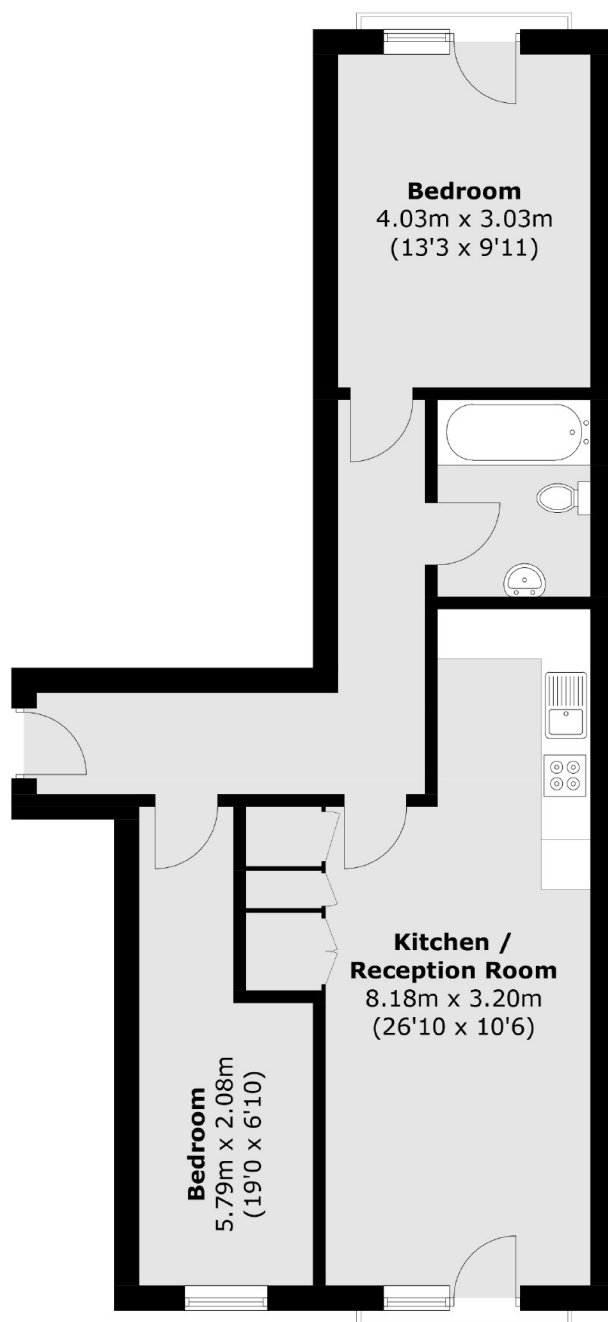
A well presented second floor purpose built apartment offering approximately 694 sq ft of accommodation. Tube and rail services into London via the District Line, South West Trains and London Overground are available from Richmond and North Sheen stations.

Garden Road provides great access to the town centre of Richmond where a plethora of fine restaurants and eateries can be found amongst a vast array of shops, outstanding transport links, the River Thames, Richmond Green and Richmond Park whilst also being conveniently situated beside the Royal Botanic Gardens, Kew and the Old Deer Park area.

Features

- Two Bedrooms
- Spacious Reception Room
- Open Plan Fitted Kitchen
- Modern Bathroom
- Communal Gardens
- Underground Parking Space

Garden Road, Richmond, TW9



Total area (approx.): 64.5 sq. m (694.3 sq. ft)