

Sandycombe Road, TW9

£300,000

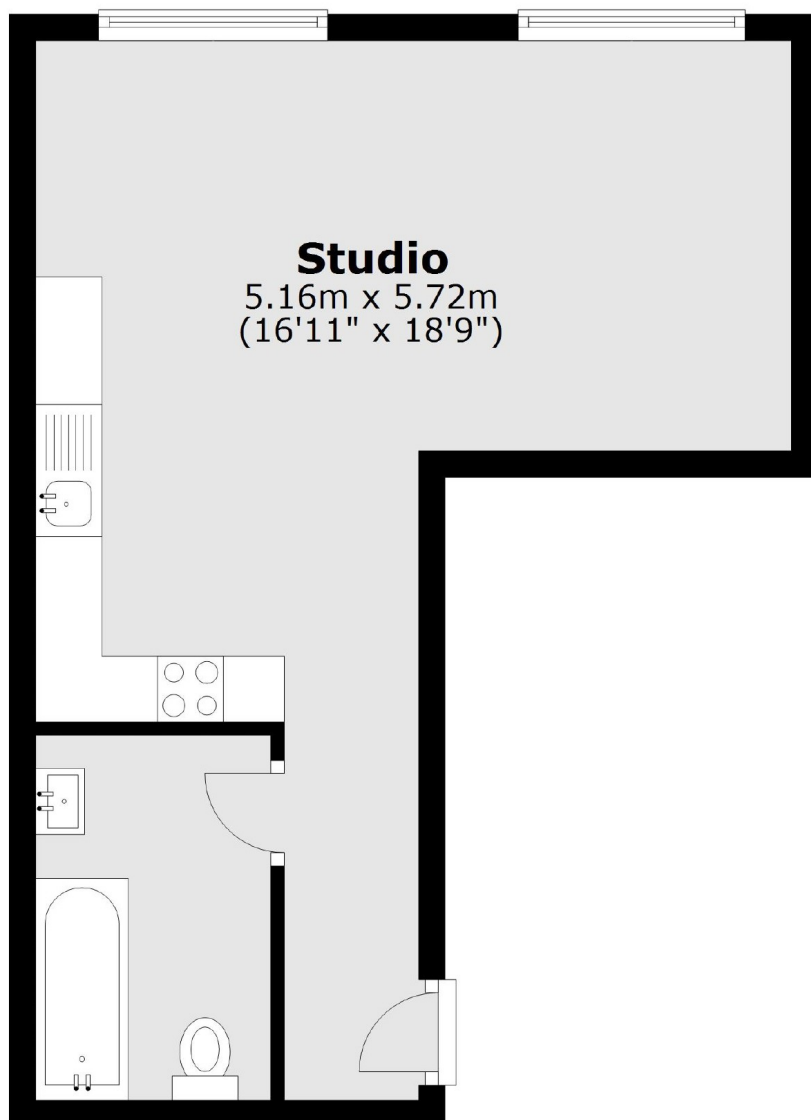
A beautifully designed modern studio apartment situated in a prime location in Kew Village which would be perfect for first time buyers, buy to let investors, or those looking for a pied-a-terre located just a five minute walk to Kew Gardens Station.

Sandycombe Road is ideally located for Kew Village and the Royal Botanic Gardens Kew. The commuter is equally well catered for with Kew Gardens and North Sheen stations close to hand with additional excellent bus services to Central London.

Features

Studio Apartment
Outstanding Condition
Close To Kew Gardens
Ground Floor
Kew Village
No Onward Chain

Sandycombe Road, Kew, TW9



Total area: approx. 32.0 sq. metres (344.9 sq. feet)