



Strand Drive, TW9

£950,000

A well presented three double bedroom apartment in a popular location in Kew, that has a dual aspect living room, separate utility room, two bathrooms, private balcony and allocated parking.

Strand Drive is well located for Kew Retail Park, Kew Village and Kew Green. The development has a concierge service and a residents gym.

Features

- Gated Development
- Three Double Bedrooms
- Balcony
- Allocated Parking
- Two Bathrooms
- Communal Gardens



Strand Drive, TW9

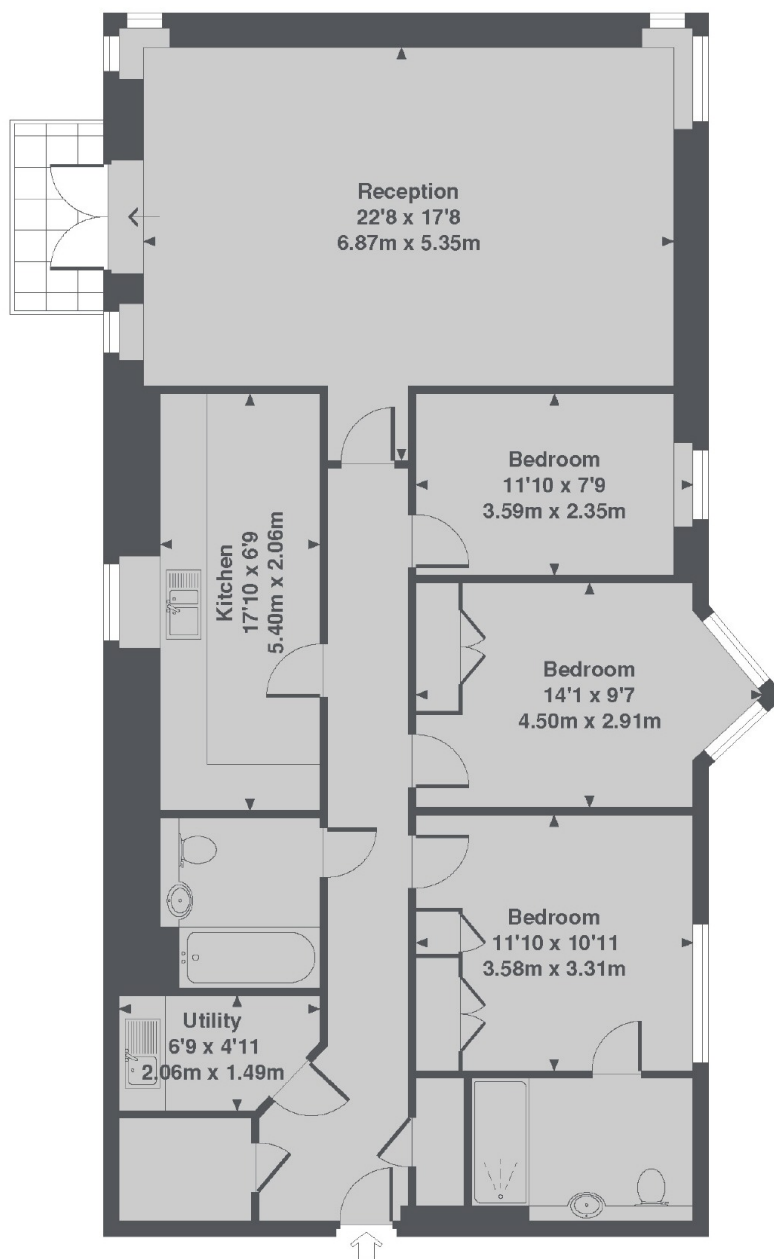
There is a dual aspect living room with a private balcony overlooking the communal grounds, modern kitchen with a small breakfast seating area and a separate utility space.

The master bedroom has an en suite bathroom and fitted wardrobes, there is also a second double bedroom with fitted wardrobes and a third double bedroom.

There is also allocated parking, concierge service and a residents gym included with this apartment.



Strand Drive, Kew, TW9



2nd Floor

Birchgrove House, Strand Drive, TW9
Total Approx. Floor area 1154 Sq. Ft. (107.2 Sq. M.)