



Hanson Close, SW14

£500,000

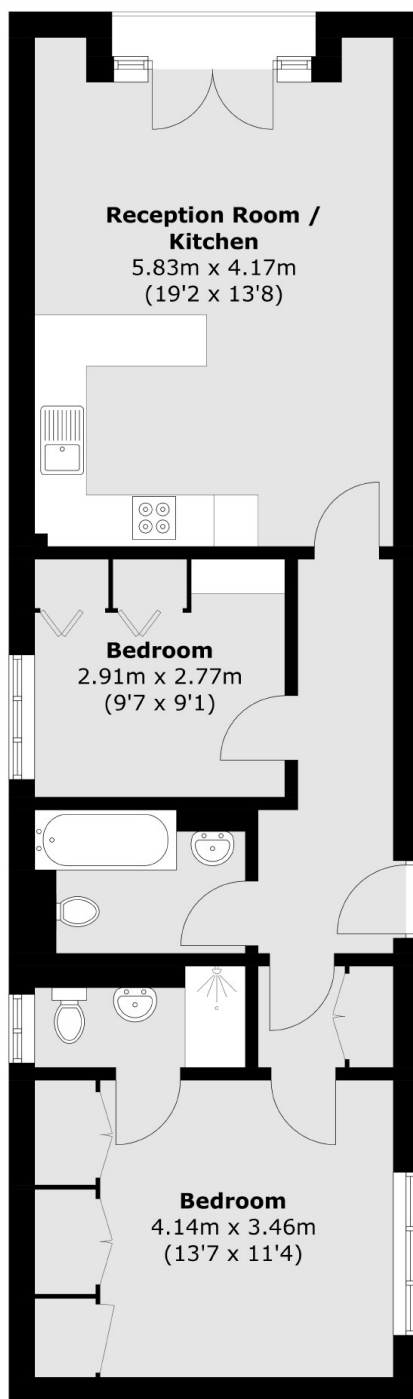
A well presented two bedroom, two bathroom second floor apartment which offers an open-plan kitchen and living room, an allocated off street parking space and is conveniently located within a gated development close to Mortlake Station.

Hanson Close is ideally located for the extensive shopping and leisure amenities of East Sheen including Waitrose and a number of gastro pubs, restaurants and coffee shops together with bus routes giving access to Richmond, Putney, Barnes and Hammersmith. Mortlake mainline station which provides regular services to London Waterloo is approximately 0.2 miles away.

Features

- Two Bedrooms
- Two Bathrooms
- Gated Development
- Modern Apartment
- Allocated Parking Space
- Close To Mortlake Station

Hanson Close, London, SW14



Total area (approx.): 63.9 sq. m (687.8 sq. ft)