



Church Avenue, SW14

£1,295,000

A terraced four bedroom period house in the heart of East Sheen which is arranged over three floors, comprises four bedrooms and is offered to the market with no onward chain.

Church Avenue is ideally located for the extensive shopping and leisure amenities of East Sheen including Waitrose and a number of gastro pubs, restaurants and coffee shops together with bus routes giving access to Richmond, Putney, Barnes and Hammersmith. Mortlake mainline station which provides regular services to London Waterloo is also very close by.

Features

- Four Bedrooms
- Two Reception Rooms
- Separate Fitted Kitchen
- Two Bathrooms
- East Facing Rear Garden
- No Onward Chain



Church Avenue, SW14

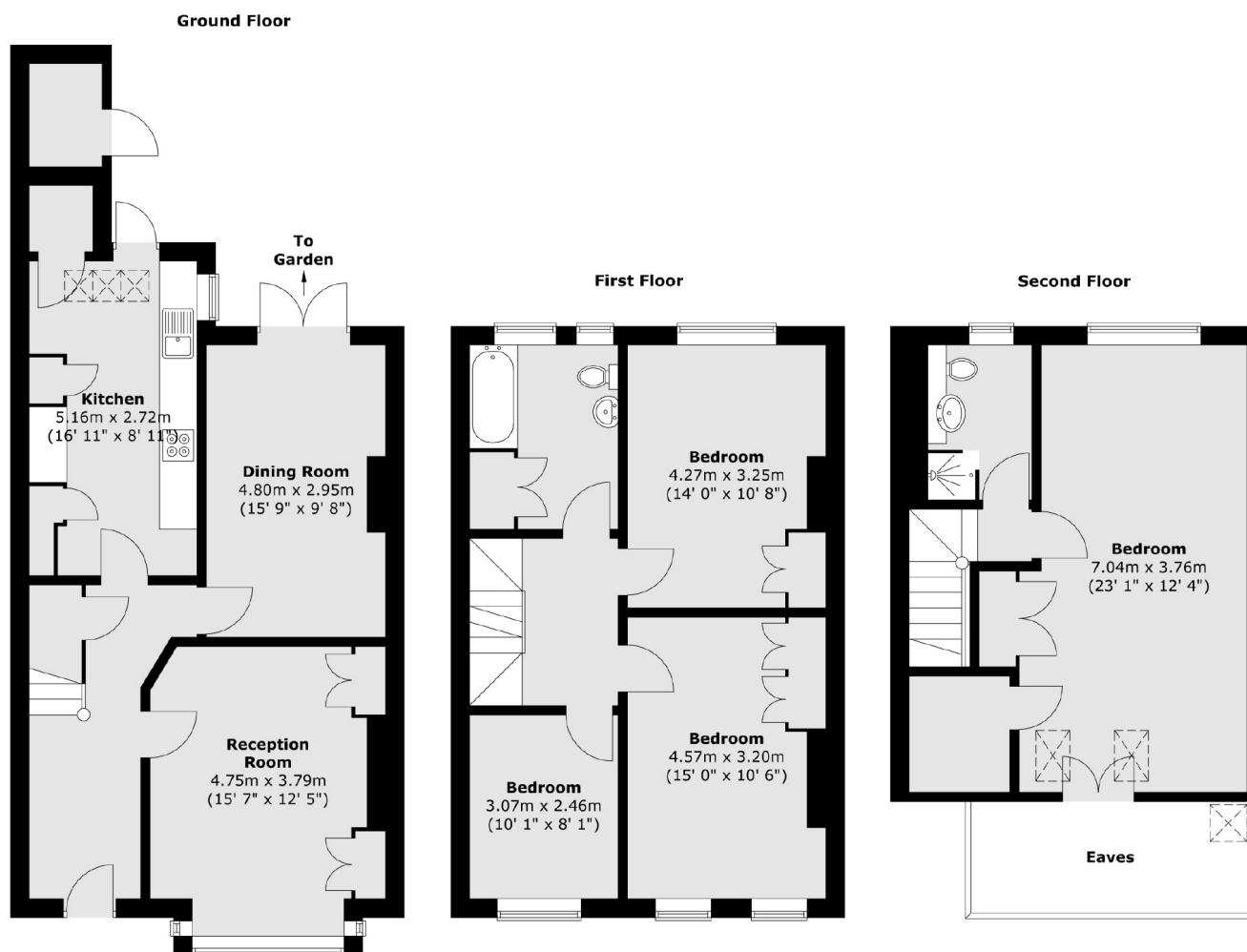
The ground floor accommodation comprises a generous hallway which leads into the bay front reception room with feature fireplace, to the rear is the separate fitted kitchen with door leading to the garden, and a separate dining room with fireplace and french doors also leading out onto the rear garden.

The first floor consists of two large double bedrooms both with built in wardrobes, a smaller bedroom come study, and a modern family bathroom. Stairs then lead to the second floor which houses a large master double bedroom with ample built-in storage and a separate secondary bathroom.

To the front of the house is a small garden and to the rear is a good sized East facing garden laid to patio and lawn with brick built storage.



Church Avenue, London, SW14



Total area (approx.) : 153.3 sq. m (1650 sq. ft)
Total store area (approx.) : 2 sq. m (22 sq. ft)