

Sheen Park, TW9

£275,000

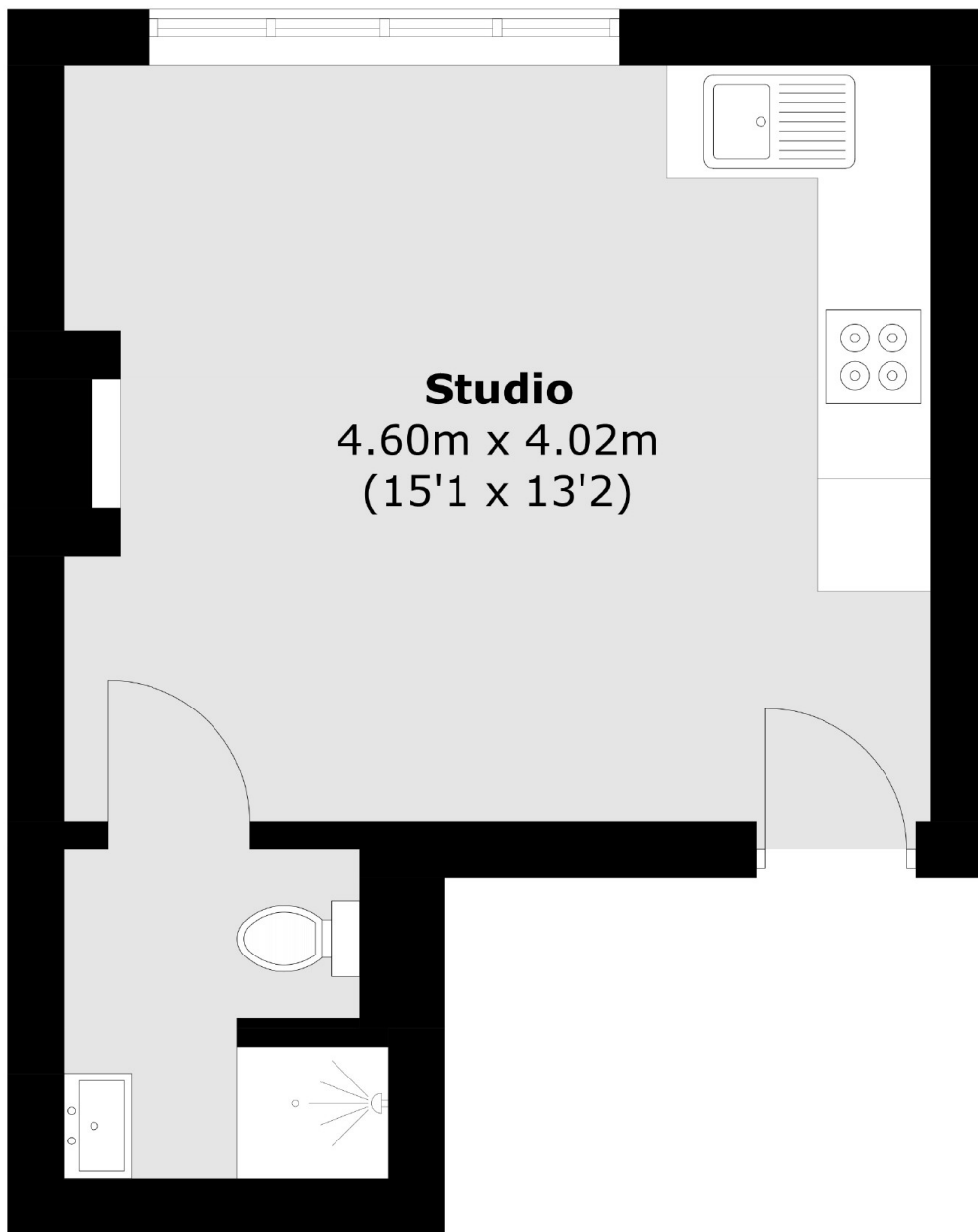
A charming ground floor Studio apartment set within this handsome Edwardian conversion. The property has wooden floors throughout, a modern kitchen with built-in appliances and a modern three piece bathroom. The property also benefits from no onward chain.

Sheen Park is centrally located with Richmond town centre, Richmond Park and Richmond Riverside all being close by. Richmond train station offers access to and from London by tube or rail via the District line, South West trains and the London Overground service.

Features

- Studio Apartment
- Modern Kitchen
- Modern Bathroom
- Period Conversion
- High Ceilings
- No Onward Chain

Sheen Park, Richmond, TW9



Total area (approx.): 21.9 sq. m (235.7 sq. ft)

Dexters

Richmond
1 Sheen Road
Richmond
TW9 1AD
Sales
020 8288 9988

Energy Rating: C. We aim to make our particulars both accurate and reliable. However they are not guaranteed; nor do they form part of an offer or contract. If you require clarification on any points then please contact us, especially if you're traveling some distance to view. Please note that appliances and heating systems have not been tested and therefore no warranties can be given as to their good working order.

 **RICS** | Regulated
Estate Agent
and Letting Agent

dexters.co.uk