



## Woodman Mews, TW9

£430,000

A beautifully presented one double bedroom flat situated on the ground floor of this well-maintained building within the popular Kew Riverside development. The apartment has a large private terrace and comes with an allocated parking space in the underground car park.

Woodman Mews is a sought after residential development set within communal landscaped gardens. Located within easy reach of the Thames Path, Kew Retail Park, Kew Gardens Station providing District Line and Overground services and the local village shopping amenities.

### Features

- Kew Riverside
- One Double Bedroom
- Allocated Parking Space
- Private Terrace
- 24/7 Concierge
- Residents Gym



## Woodman Mews, TW9

This bright and spacious apartment is approached by a well-maintained communal hallway with entry phone access. The property is very well proportioned, has been completely refurbished by the current owner and is presented in excellent condition throughout.

The accommodation consists of an entrance hall with storage cupboard, a spacious open plan reception room providing access to a very generous terrace which has recently been re-decked, a modern fitted kitchen with integrated appliances, a double bedroom also leading to the terrace, and a contemporary bathroom.

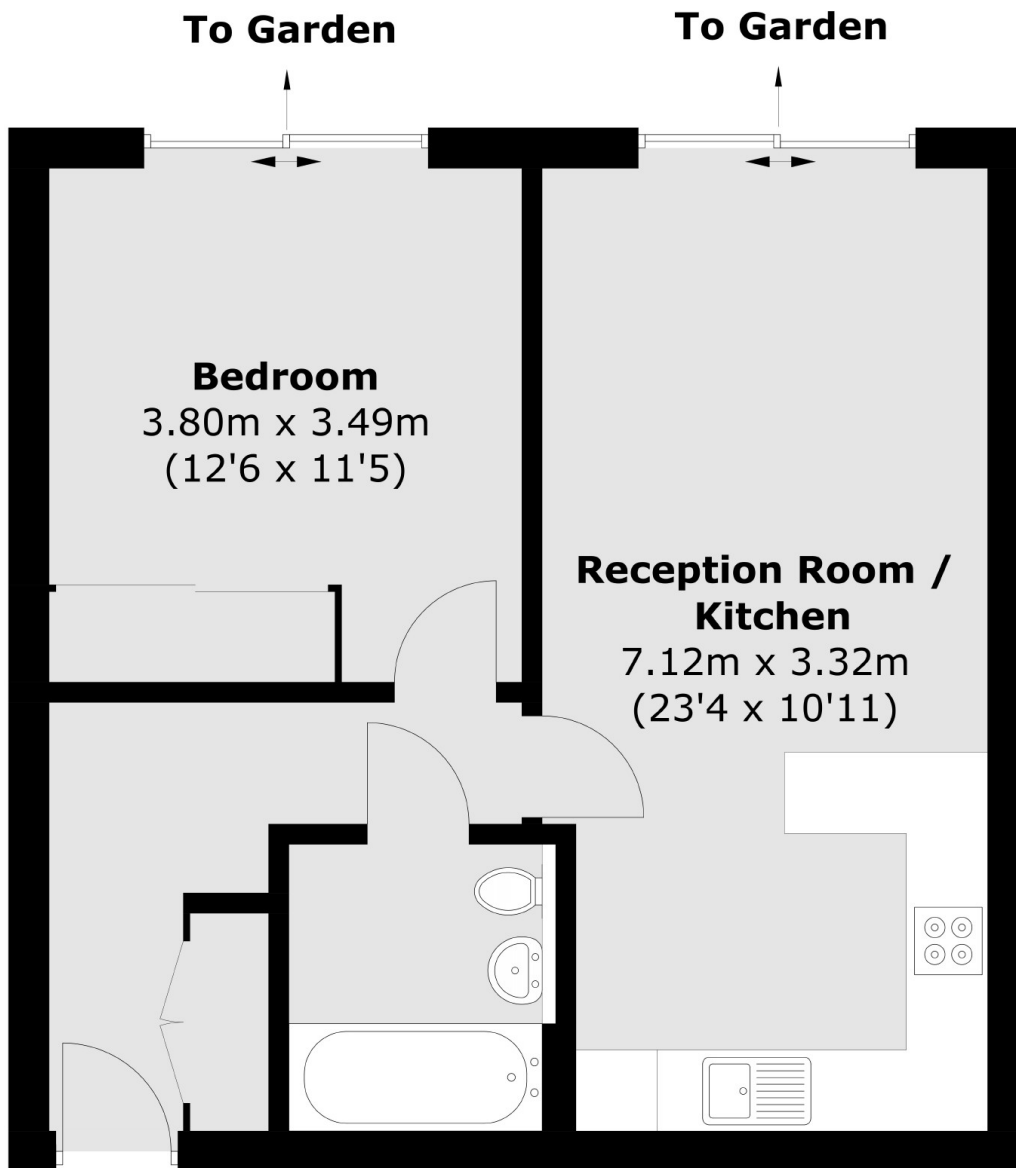
The Kew Riverside Development offers residents an abundance of facilities, including allocated parking for one car, a 24 hour concierge, residents gym, pool and health & leisure club, and direct access to the Thames Path.







# Woodman Mews, Kew, TW9



Total area (approx.): 50.1 sq. m (539.3 sq. ft)

**Dexters**

Richmond  
1 Sheen Road  
Richmond  
TW9 1AD  
Sales  
020 8288 9988

Energy Rating: C. We aim to make our particulars both accurate and reliable. However they are not guaranteed; nor do they form part of an offer or contract. If you require clarification on any points then please contact us, especially if you're traveling some distance to view. Please note that appliances and heating systems have not been tested and therefore no warranties can be given as to their good working order.

 **RICS** | Regulated  
Estate Agent  
and Letting Agent

[dexters.co.uk](http://dexters.co.uk)