



Bainbridge Close, TW10

£3,995 Per calendar month

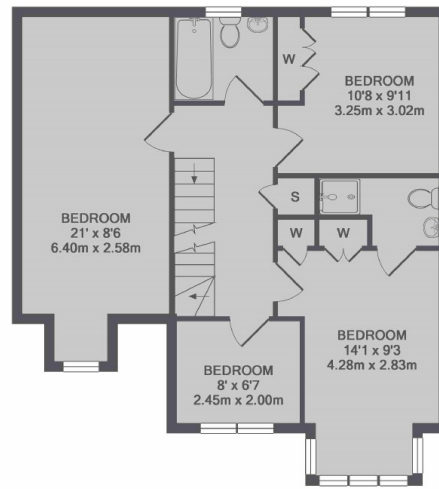
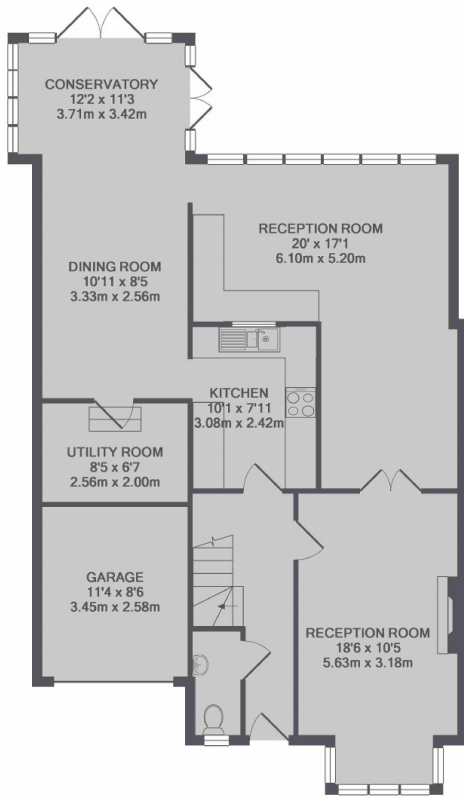
This impressive five bedroom, detached family home is set within an exclusive gated development. The property has been finished to an excellent standard with abundance of entertaining space; neutrally decorated throughout and ideal to put your personal touch on it.

Bainbridge Close is a peaceful road moments from the gates to Richmond Park and Ham Common, and close to The River Thames, Richmond Golf Club and many popular local schools. Richmond's busy town centre and train/tube station are also within easy reach.

Features

- Gated Development
- Detached Family House
- Near Richmond Park
- Beautifully Presented
- Five Bedrooms
- Three Bathrooms

Bainbridge Close, Richmond, TW10



TOTAL APPROX. FLOOR AREA 2032 SQ.FT. (188.8 SQ.M.)