



Courtlands, TW10

£2,750 Per calendar month

This spacious two bedroom, two bathroom, apartment located in the popular Courtlands development with it's close proximity to excellent schools. A stylish finish throughout and spacious living, a modern kitchen and a south-facing terrace with a gate leading onto communal gardens.

Courtlands is a prestigious development just moments from a gate to Richmond Park. The property is a short distance from North Sheen Station and Richmond town centre.

Features

- Two Double Bedrooms
- Newly Decorated
- Residents Parking
- South Facing Balcony
- Wood Floors
- Two Bathrooms



Courtlands, TW10

The property is entered via a communal entrance hall with secure entry phone system and provides access to the ground floor accommodation.

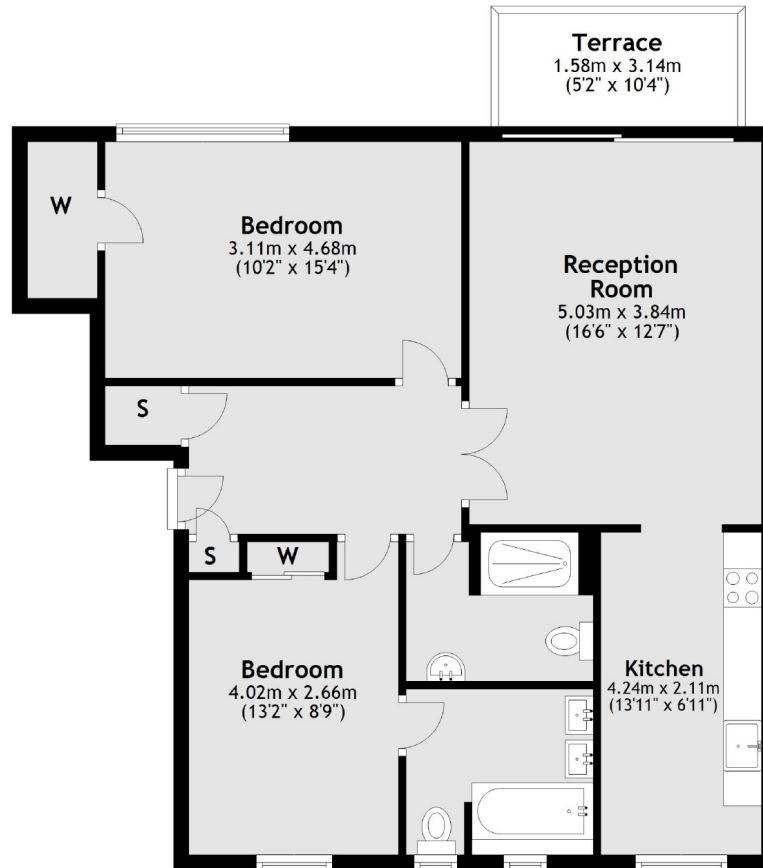
The accommodation consists of a large entrance hall with storage cupboards, a spacious reception room with sliding doors leading to a private balcony with gate onto the communal gardens, a fully fitted modern kitchen, a master double bedroom with built-in wardrobes and modern ensuite, a second double bedroom with built-in wardrobes and an additional spacious family bathroom.

To the outside is unallocated off street parking spaces for residents and visitors. The property is surrounded by well maintained communal grounds with areas laid to lawn with mature trees, flowers and shrubs including a delightful pond.



Courtlands, Richmond, TW10

Ground Floor



Total area: approx. 77.0 sq. metres (828.3 sq. feet)