



## Richmond Hill, TW10

£1,450,000

In the prime location on Richmond Hill overlooking Petersham Meadows, this beautifully presented mansion building offers three double bedrooms, wooden floors throughout, modern kitchen & bathrooms. Leading out from the dining room to the private garden is set on two separate levels.

Park House is close to The Terrace Gardens with famously beautiful views, Richmond Park, Richmond town centre and train station. An ideal location for families, Richmond Hill has outstanding state and private school options, including The Vineyard, King's House, Old Vicarage and Marshgate Primary School.

### Features

- Three Bedroom Flat
- Modern Kitchen
- Terrace Garden
- Neutrally Decorated
- Richmond Hill
- Wooden Floors Throughout



## Richmond Hill, TW10

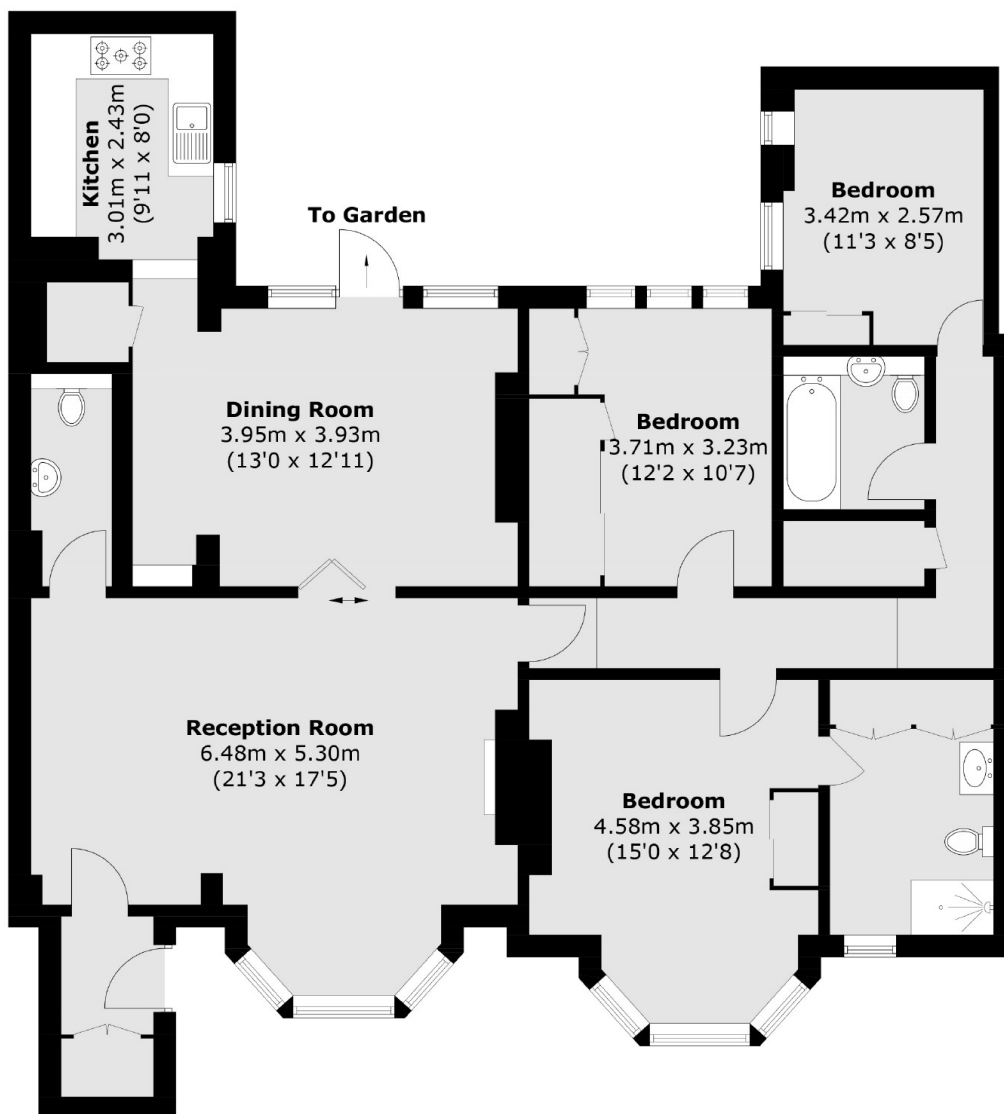
The property is neutrally decorated throughout and offers wooden flooring in the living space, a bright and spacious reception room a modern kitchen and a dining room leading out onto the terrace garden.

The principle bedroom offers wooden flooring with en-suite shower room and there are two further double bedrooms, modern family bathroom and a separate cloakroom.

Located on the corner of Richmond Hill, Park House is perfectly located in the heart of Richmond Hill village, a small community with a beautiful village at its heart, The village perfectly balances city and country living thanks to the spacious green spaces and easy London transport links.



# Richmond Hill, Richmond, TW10



Total area (approx.): 129.7 sq. m (1,396.1 sq. ft)