



Chaucer Avenue, TW9

£1,125,000

Offering 1,505 sq ft of accommodation is this beautifully presented family home. The property offers spacious accommodation arranged over three floors and would make a perfect home for a family.

Chaucer Avenue is ideally located for Richmond Park and Royal Botanic Gardens Kew. The commuter is equally well catered for with Richmond, Kew Gardens and North Sheen stations close to hand with additional excellent bus services to Central London.

Features

- Three Double Bedrooms
- Fourth Bedroom Come Study
- Two Bathrooms
- Two Reception Rooms
- Open Plan Kitchen/Diner
- Large Private Garden



Chaucer Avenue, TW9

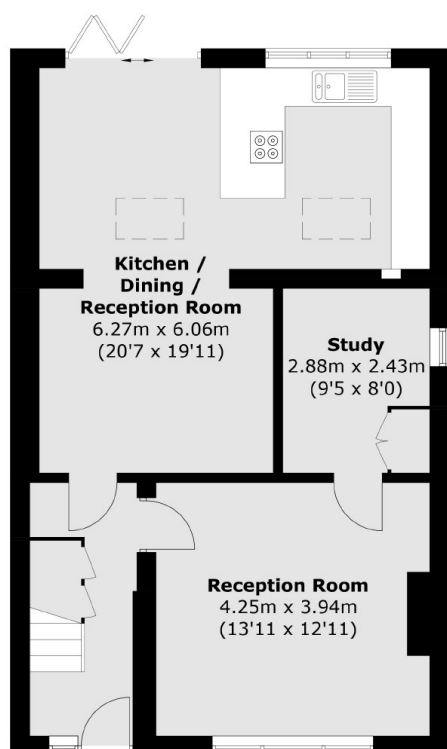
The ground floor accommodation consists of an entrance hall with under stairs storage, a spacious front reception room with feature fireplace which leads into the study come fourth bedroom, and a second reception room which leads down into the open plan kitchen/dining room. Bi-fold doors lead from the dining area to the rear garden.

The first floor consists of a landing, two double bedrooms and a family bathroom. The second floor comprises a master suite with ensuite and also extra area within the eaves which is currently being used as an office.

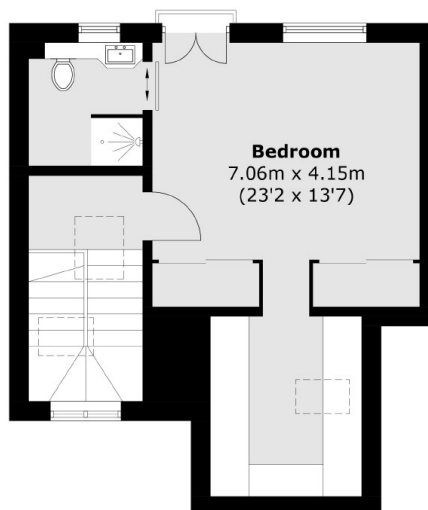
Outside to the rear is a large private garden laid to lawn and decking, with a small garden to the front of the property.



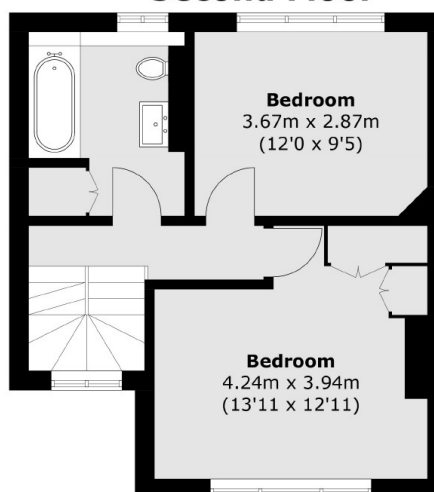
Chaucer Avenue, Kew, TW9



Ground Floor



Second Floor



First Floor

Total area (approx.): 139.9 sq. m (1,505.8 sq. ft)